

## A COIN HOARD FROM THE TIME OF SIGISMUND OF LUXEMBURG IN THE COLLECTION OF THE “IOAN RAICA” MUNICIPAL MUSEUM IN SEBEȘ

Teodor MUNTEAN\*

The hoard presented below is part of the numismatic collection of Alfred Heitz and was donated by his granddaughter Grete to the museum in Sebeș in the year 1966 via school teacher Theobald Streitfeld. We have no information as to the findspot of this hoard. All that we know is that its owner, Alfred Heitz, lived in Sebeș between 1881-1921 and was the son of Andreas Heitz the city priest (*Stadtpfarrer*) of Sebeș.

The hoard consists of small-denomination coins of Sigismund of Luxemburg, except for one which is attributed to Nicolae Redwitz. On the whole, we are looking at 1633 coins, 1104 *denarii parvi*, 480 *quartings*, 47 *denarii* and a *ducat* (**fig. 3**) dating from the years 1387-1437, the reign of Sigismund of Luxemburg. Chronologically speaking, the most recent are the *quartings* minted between 1430-1437 that due to their particularly small intrinsic value were removed from circulation after the death of Sigismund of Luxemburg.<sup>1</sup>

As regards the findspot of this hoard, all we can do is formulate hypotheses because there is a complete lack of information in this respect. Given that Alfred Heitz was born and lived for the better part of his life in Sebeș and that during the period the coins were in circulation the town of Sebeș went through a series of devastating events, we can surmise that the findspot of this hoard lies somewhere in the Sebeș area, most probably in the town itself.

In the year 1438 when the Turkish troops led by Sultan Murad II devastated Țara Hațegului, the villages and towns along the Mureș Valley the town of Sebeș was also besieged by the invaders.<sup>2</sup> We possess quite accurate information in this respect from a witness to the events, the so-

---

\* MA student, „1 Decembrie 1918” University of Alba Iulia; e-mail: teodormuntean@gmail.com.

<sup>1</sup> Pap, Bartók 1996, p. 184, note 17.

<sup>2</sup> Anghel 1976, p. 148; Dudău, Sonoc 2008, p. 158-159.

called Anonymous Student,<sup>3</sup> aged 15-16 at that time, who was then captured by the Ottomans. Taken as slave to Asia Minor, he manages to regain his freedom 20 years later and becomes a Dominican monk. In his book entitled *Tractatus de moribus, conditionibus et nequicia turcorum* (*On the Religion, Customs and Villainy of the Turks*) and published in 1481 he describes the events of 1438.<sup>4</sup>

This book tells us that at the intercession of voivode Vlad Dracul the town yielded to the Turks under the promise that its inhabitants would not be sold and that, together with their possessions, they could move as free men south of the Danube.<sup>5</sup> There were, however, people who refusing to surrender barricaded themselves in one of the towers of the citadel<sup>6</sup> but the Turks set the tower on fire and took the survivors (among them also the Anonymous Student) as slaves back to Turkey.<sup>7</sup>

Recently, Romanian numismatic bibliography became enriched with a similar hoard found in the collection of Dr. Friedrich Mauksch from Sebeş. It consists of 81 coins of Sigismund of Luxemburg, namely 4 *denarii*, 75 *denarii parvi* and 2 *quartings*.<sup>8</sup> This hoard could have well been part of the hoard we are discussing here as they are almost identical in structure and come from the same town, but this is, of course, just a hypothesis.

All coins making up the hoard discussed here<sup>9</sup> are legible and could be identified. However, because of clipping, bad state of conservation and the sometimes accentuated wear it was rather difficult to make out the marks. In some cases, the coins were mis-struck the marks remaining outside the coin surface. Furthermore, in the absence of laboratory tests it was impossible to differentiate between silver and silver-coated ones, which hindered the identification of forgeries. Every coin was nevertheless weighed and measured.

The phenomenon of coin counterfeiting – which, as we shall see here, is encountered also in the hoard under discussion – assumed proportions under Sigismund of Luxemburg when, because of depreciation and coin debasement, forgeries flourished especially in low value coinage.

---

<sup>3</sup> In historiography he is known by several names: the *Anonymous Student* (Anghel 1976, p. 148), the *Student from Romos* (Dudău, Sonoc 2008, p. 158), *Captivus Septemcastrensis, Frater Schebeschensis* or *Georgius de Hungaria* (Dudău, Sonoc 2008, p. 159).

<sup>4</sup> Sârbu 2001, p. 216; Dudău, Sonoc 2008, p. 158-159.

<sup>5</sup> Dan 1997, p. 279.

<sup>6</sup> The tower is currently known as the *Student's Tower*.

<sup>7</sup> Anghel 1976, p. 148; Dudău, Sonoc 2008, p. 161.

<sup>8</sup> Dudău, Sonoc 2008, p. 149-185.

<sup>9</sup> At this point, we wish to acknowledge Mr Francisc Pap, PhD, for his support and suggestions which helped to clarify some aspects regarding this hoard.

For example, in a document dating from 1387, the first year of Sigismund of Luxemburg's reign, the king grants "the right to put to the sword" malefactors and coin counterfeiters to the Károlyi family from the Satu Mare County, Ladislau and Andrei, the sons of Merhard.<sup>10</sup> There is evidence that the early 15<sup>th</sup> century saw a series of death sentences and dispossessions due to coin counterfeiting in the counties of Somogy, Satu Mare, Maramureş and Ugocea. Thus, from the year 1409 date the cases of Iliaş, the son of Sânmihai, Iacob, the son of Johan Sandor, also known as Koch, Johan, also known as the *Miner*, Petru Auraru and Martinus, also known as Konak, who were all dispossessed of their goods and sentenced to death for coin, seal and document counterfeiting.

If round the year 1409 the punishment for coin counterfeiting was death by burning, the year 1422 saw it reduced to a fine due to the increased economic and political power of the nobles. From this latter year dates the case of Posar Dominicus from Kawa who was sentenced to pay 54 florins and 2 horses worth of 40 florins for all his ill deeds, coin counterfeiting included.<sup>11</sup>

In 1427 a decree was issued prohibiting the use of counterfeited *denarii* and demanding that they be removed from circulation until 25 July. Otherwise, any person caught having ten fake *denarii parvi* out of 100 would be deemed guilty.

Upon the new monetary reform of 1430 the *ducats* are removed from circulation and small denominations introduced: the great *denarius* and the *quarting*. In the beginning, when they were first issued, a great *denarius* equalled 4 *quartings* but the ratio eventually changes to 1:10 due to the depreciation of the *quarting*.<sup>12</sup>

Clear proof that the coinage of Sigismund of Luxemburg was subjected to counterfeiting we have from the medieval fortress of Pietra Craivii (Alba County) lying not far away from Sebeş. Thus, during the archaeological investigations undertaken by Gh. Anghel in 1968 at the place called *La Vânătoare* lying under the precipice below the medieval citadel, among the objects found there was also a medieval coin die.<sup>13</sup> The iron die has one round end and the bottom in the shape of a cylinder which turns into a trapezoid. It has a total length of 8.8 cm, the trapezoid is 3.2/1.2 wide and the diameter of the base measures 1.7 cm (**fig. 2**).<sup>14</sup> The engraved part

---

<sup>10</sup> Velter 1978, p. 36.

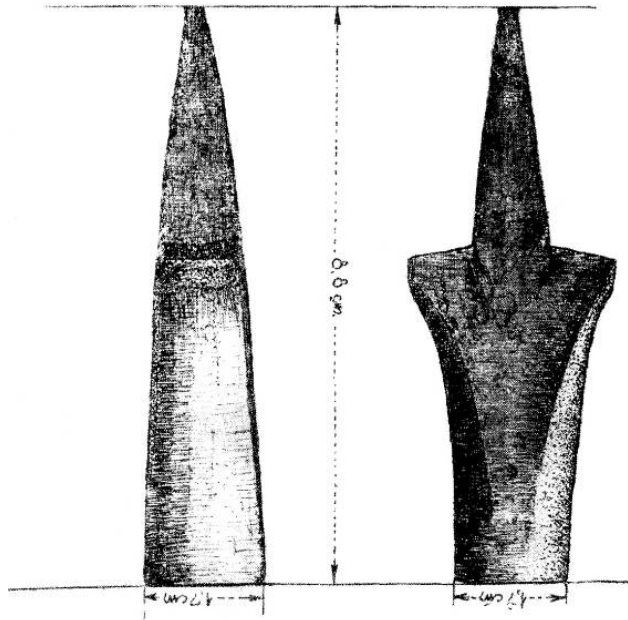
<sup>11</sup> *Ibidem*, p. 38.

<sup>12</sup> Keve 2007, p. 198.

<sup>13</sup> Anghel 1974, p. 151.

<sup>14</sup> *Ibidem*, p. 152.

of the die features the obverse of a coin that is identical with the *quarting* issued by Sigismund of Luxemburg (**fig. 3**)<sup>15</sup>, the existence of an illicit mint for counterfeiting coins being further supported by the numerous fragments of bronze sheet found there during the excavations.<sup>16</sup>



**Fig. 1.** Mediaeval coin die found at Piatra Craivii (*apud* Anghel 1974)



**Fig. 2.** The engraving on the die found at Piatra Craivii (a); the reverse of a *quarting* issued by Sigismund of Luxemburg (b) (*apud* Anghel 1974)

There is no documentary reference to coin counterfeiting at Piatra Craivii dating from that period, but we do have a document dated 1484

<sup>15</sup> *Ibidem*, p. 153, fig. 2a.

<sup>16</sup> *Ibidem*, p. 153.

addressed to Ștefan Bathory, the voivode of Transylvania by bishop Ladislau Gereb:

“It was not without indignation that I found out that this castle going by the name of Kechkeş castrum (Goat's Citadel), this castrum built for the protection of the kingdom, in utter disregard of the laws of the kingdom and our commands, was turned into a despicable den for scum and thieves where [...] by the bishop's account, innumerable crimes are committed [...] and our castellan himself is the mastermind behind them [...]. We order that you take all necessary measures with utmost determination so that this castle of ours is cleared of the multitude of criminals and malefactors and no longer left at their disposal.”<sup>17</sup>

The order of 1484 did not have any effect whatsoever so that in the year 1515, at the bishop's insistence, King Vladislav II ordered that the citadel be torn down in spite of the fact that the voivode of Transylvania tolerated the castellan's activities.<sup>18</sup>

Even if the document does not refer to any coin counterfeiting taking place there, it represents supplementary evidence that along the other illegal activities, there could have also existed an illicit mint which might as well have functioned after the death of Sigismund of Luxemburg.

Another piece of evidence supporting the existence of coin counterfeiting comes from the Lita fortress situated approximately 35 km south-west of Cluj-Napoca. Apart from fakes imitating the coinage of Sigismund of Luxemburg there were also found copper and silver obols and *denarius* flans that never got to be struck, as well as die waste and various utensils used for this purpose. Coin forgery seems to have persisted here well into the 16<sup>th</sup> century.<sup>19</sup>

Some illicit mints seem to have functioned even under the direct supervision of certain noblemen. Moreover, coin counterfeiting was not uncommon in official mints either, despite the numerous interdictions the king decreed.<sup>20</sup>

---

<sup>17</sup> „Am aflat nu fără indignare că acest castel numit castrul Kechkeş (Cetatea Caprei) cu disprețul legilor regatului și poruncilor noastre, acest castru clădit pentru apărarea regatului, a fost transformat într-un cuib nerușinat al plebei și hoșilor, de unde se comit [...] după spusele episcopului, continue nelegiuri [...] și însăși castelanul nostru este conducător al acestor nelegiuri [...]. Vă poruncim ca în modul cel mai hotărât să luați toate măsurile ca acest castel al nostru să fie curățat de mulțimea criminalilor și nelegiuiților și să faceți ca el să fie scos din situația de castru la dispoziția unor nelegiuiți”. *Ibidem*, p. 154.

<sup>18</sup> *Ibidem*.

<sup>19</sup> Gyulai *et alii* 1983, p. 522-523.

<sup>20</sup> *Ibidem*, p. 522.

Having a look on the table we notice that it was possible to accurately determine the mint marks and privy marks on only 45% of all coins (735 pieces). Their identification was severely hindered by clipping (as in the case of the *denarii* and *denarii parvi*), their bad state of conservation and wear. For 544 coins of the 735 whose marks are legible we were able to identify the mints where they were struck, as follows: Baia Mare (86 pcs), Baia de Arieş (32 pcs), Bratislava (82 pcs), Buda (44 pcs), Košice (25 pcs), Kremnica (23 pcs), Pécs (91 pcs), Sibiu (122 pcs), Smolnik (21 pcs), Székesfehérvár (11 pcs), Timișoara (6 pcs) and Sighișoara (1 pc) (**fig. 4**).

Because of the clippings the *denarii parvi* underwent, only 366 coins out of 1104 bear visible mint and privy marks. We were able to identify the mints where 217 of these coins were struck, for the other 149, however, the mints remain unknown although the marks were legible. Accordingly, the *denarii parvi* were struck at: Kremnica (22 pcs), Pécs (91 pcs), Baia Mare (18 pcs), Sibiu (2 pcs), Buda (20 pcs), Košice (5 pcs), Baia de Arieş (32 pcs), Timișoara? (6 pcs) and Smolnik (21 pcs) (**fig. 4**).

Out of a total of 480 *quartings*, 342 feature legible marks and the mints for 300 of them were identified. As for the other 42 coins, although their marks are legible, we were unable to identify the mints. The *quartings* were struck in: Kremnica (1 pc), Baia Mare (46 pcs), Sibiu (120 pcs), Buda (24 pcs), Košice (16 pcs), Bratislava (82 pcs), Székesfehérvár (11 pcs) (**fig. 4**).

The legend of clipped *denarii* is in some cases only partially legible, the marks having sometimes remained outside the coin surface. There are 47 *denarii* in this hoard, 25 of them bear legible marks and we could identify the mints for 19 of them. The mints identified are Baia Mare (15 pcs) and Košice (4 pcs) (**fig. 4**).

Moneyers in the mints at Kremnica and Baia Mare are Markus from Nürnberg, at Buda, Onofrio Bardi, Angelo Walich and Michael Nadler, at Baia Mare, Nikolaus Wasserpauch and at Košice, Urbanus Polner, Petrus Reichel, Iacobus, Christianus and Ulrich Kamerer. Famous bankers Markus from Nürnberg and Ulrich Kamerer improved the striking procedure and finalised the appearance and significance of the marks.<sup>21</sup>

The coins weigh less than the average normal weigh proposed by Arthul Pohl, namely 0.51 g for *denarii* and 0.48 g for *quartings*.<sup>22</sup> *Denarii parvi* have an average weight of 0.31 g, ranging between 0.10 and 0.58 g (**fig. 5**), *quartings* have an average weight of 0.43 g, ranging between 0.20 and 0.89 g (**fig. 6**), while the *denarii* have an average weight of 0.31 g, ranging between 0.10 and 0.49 g (**fig. 7**).

---

<sup>21</sup> Velter 1978, p. 34.

<sup>22</sup> Pohl 1967-1968, p. 49, table I.


Classifying the coins according to the mint we notice that the lightest are the *denarii parvi* minted in Timișoara (0.22 g) and Baia Mare (0.28 g) (**fig. 8**), the *quartings* minted in Kremnica (0.36 g) and Buda (0.41 g) (**fig. 9**) and the *denarii* struck in Košice (0.32 g) (**fig. 10**).

Apart from *denarii*, *denarii parvi* and *quartings*, the hoard also contains a *ducat* of Sigismund of Luxemburg minted in Sighișoara.

Furthermore, the hoard contains a coin attributed by numismatist Réthy László to Nicolae Redwitz, *ban* of Severin between 1430-1434, general governor of Transylvania and *comites* of the royal mint in Sibiu.<sup>23</sup> The attribution of these coins is a highly debated topic in Romanian mediaeval numismatics and no clear conclusion has been reached yet.

Hungarian numismatist Réthy László who studied the hoard found at Ipolysag (near Budapest, Hungary) consisting of Hungarian coinage of Sigismund of Luxemburg, coins attributed to Nicolae Redwitz and Wallachian coins issued by Mircea cel Bătrân, attributed these coins to Nicolae Redwitz.<sup>24</sup> His main arguments were the assumption that the shield with a cross inside represents the emblem of an order of Teutonic knights brought here by Sigismund of Luxemburg from Hungary and deployed to Severin in the year 1430, as well as the similarity between these and the Hungarian coins of that time in terms of size, execution and marks.<sup>25</sup>

Numismatist Elena Isăcescu holds that these coins are, in fact, Wallachian issues of 1396-1430 struck at Turnu Severin starting with the second half of Mircea cel Bătrân's reign and throughout the reign of Dan II.

The obverse of the coin in question features a cross moline, above the shield a crown and on the left the marks . The reverse bears a standing character, front view, wearing a crown. In the left hand he holds a sceptre and in the right a cross. The marks on the obverse are similar to those on coin number 8 from the hoard of Ipolysag.<sup>26</sup> The coin is made of a silver and copper alloy, and is rudimentarily executed.

Another hoard containing coins attributed to Nicolae Redwitz alongside issues of Sigismund of Luxemburg was found in the year 1965 at Vinerea, not far from Sebeș. The hoard dates from the 13<sup>th</sup> -17<sup>th</sup> centuries and consists mainly of coins issued by Sigismund of Luxemburg (361 pcs), among which also two coins attributed to Nicolae Redwitz, the rest of the coins in the hoard having been issued up to the early 17<sup>th</sup> century.<sup>27</sup>

---

<sup>23</sup> MBR, p. 29; Isăcescu 1980, p. 99-100; Coza 2004, p. 391-392.

<sup>24</sup> Isăcescu 1980, p. 100.

<sup>25</sup> *Ibidem*, p. 101.

<sup>26</sup> *Ibidem*, p. 101, pl. I, nr. 8.

<sup>27</sup> Coza 2004, p. 387-389.

We presently know of the existence of 15 hoards in Transylvania and Banat containing coins of Sigismund of Luxemburg. Thus, there are coins of Sigismund of Luxemburg in the hoards found at Axente Sever<sup>28</sup> (unknown number out of a 108 pcs); Becicherecu Mic (Timiș County)<sup>29</sup> (seven pieces out of unknown total), Bergăsău Mare<sup>30</sup> (Timiș County) (20 pcs out of over 1000); Cadăr (Timiș County)<sup>31</sup> (unknown number out of 40); Cluj<sup>32</sup> (unknown number out of 573), Dobârca (Sibiu County)<sup>33</sup> (approx. 200 pcs), Florești (Cluj County)<sup>34</sup> (unknown number out of 601); Gad (Timiș County)<sup>35</sup> (unknown number out of 81); Ocna Sibiului<sup>36</sup> (Sibiu County) (24 out of 24); Orșova (Caraș-Severin County)<sup>37</sup> (five pieces out of 1000); Reghin (Mureș County)<sup>38</sup> (unknown number out of 64); Sânicolau Mare (Timiș County)<sup>39</sup> (one piece out of unknown total number); Sopor de Câmpie<sup>40</sup> (Cluj County) (unknown number out of 54); Timișoara-Pădurea Vânătoarească<sup>41</sup> (unknown number out of 185); Turda (Cluj County)<sup>42</sup> (38 out of 41); Vârghiș (Covasna County)<sup>43</sup> (53 out of 55); Vinerea (Alba County)<sup>44</sup> (361 pieces out of 396); from unknown findspot<sup>45</sup> (213 of 213); unknown findspot, Dr. Mauksch collection<sup>46</sup> (81 of 81 pieces).

Other coins of Sigismund of Luxemburg come from the hoards found at Curtea Domnească from Suceava<sup>47</sup> (345 out of 351 pcs) and at Râmnicu Vâlcea<sup>48</sup> (over 100 pieces).

The hoard presented here comes to complete the data regarding the coinage issued under Sigismund of Luxemburg enriching the corpus of mint

---

<sup>28</sup> Pap 2002, p. 30.

<sup>29</sup> *Ibidem*, p. 37.

<sup>30</sup> *Ibidem*, p. 38.

<sup>31</sup> *Ibidem*, p. 48.

<sup>32</sup> *Ibidem*, p. 60.

<sup>33</sup> Weißkircher 1936, p. 316-317.

<sup>34</sup> Pap 2002, p. 80.

<sup>35</sup> *Ibidem*, p. 81.

<sup>36</sup> *Ibidem*, p. 114.

<sup>37</sup> *Ibidem*, p. 121.

<sup>38</sup> *Ibidem*, p. 134.

<sup>39</sup> *Ibidem*, p. 145.

<sup>40</sup> *Ibidem*, p. 153.

<sup>41</sup> *Ibidem*, p. 171.

<sup>42</sup> Velter 1978, p. 32.

<sup>43</sup> Pap, Bartók 1996, p. 181-196.

<sup>44</sup> Coza 2004, p. 387-388.

<sup>45</sup> Keve 2007, p. 187-198.

<sup>46</sup> Dudău, Sonoc 2008, p. 174-176.

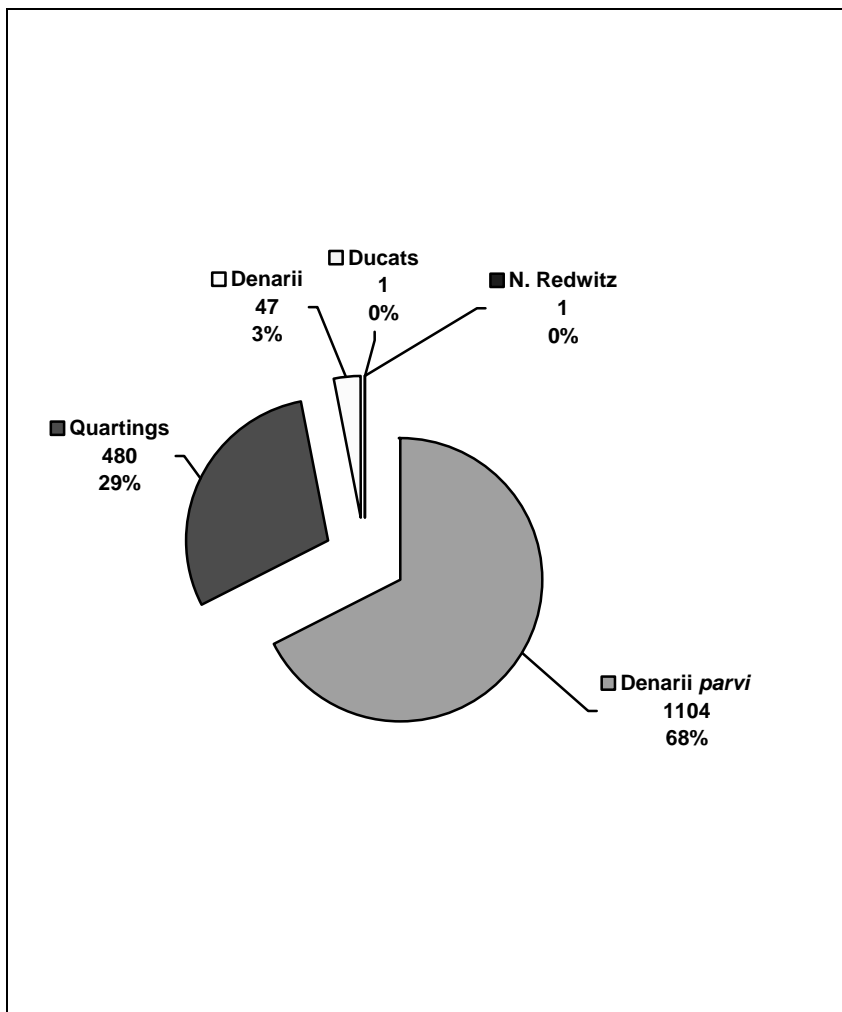
<sup>47</sup> Gogu 2008, p. 213-221.

<sup>48</sup> Iosifaru *et alii* 2008, p. 253.



and privy marks with unedited data. Furthermore, it provides new information on coin debasement in the early 15<sup>th</sup> century and brings new evidence regarding the use of petty coins for trade.

The coin attributed to Nicolae Redwitz comes to complete the corpus of similar finds. The coin deposit presented here is the second of its kind in Transylvania after the one from Vinerea where issues of this kind were found alongside coins issued by Sigismund of Luxemburg. At the same time, it is the largest hoard containing coins of Sigismund of Luxemburg ever found in Transylvania and Banat.



**Fig. 3.** The share of each coin denomination

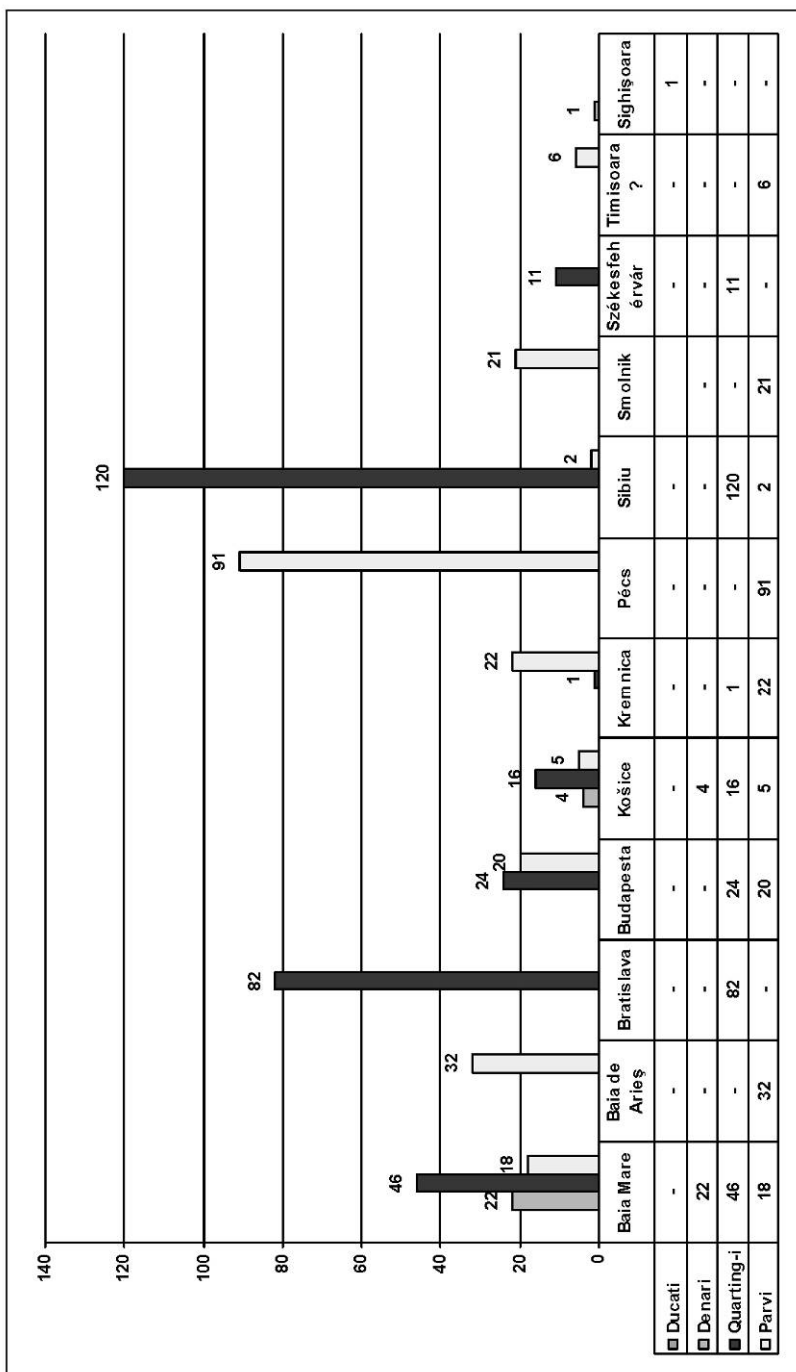


Fig. 4. Distribution by mint

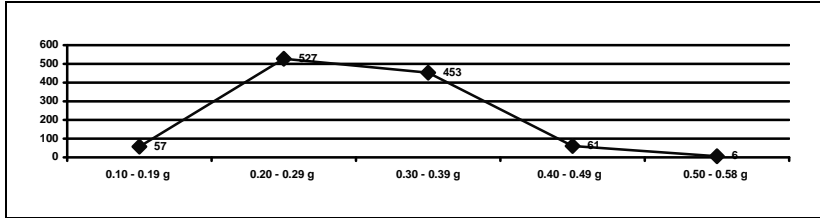


Fig. 5. Oscillations in the weight of *denarii parvi*

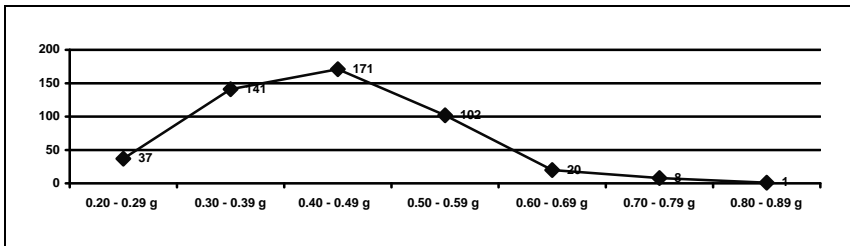


Fig. 6. Weight oscillations in *quartings*

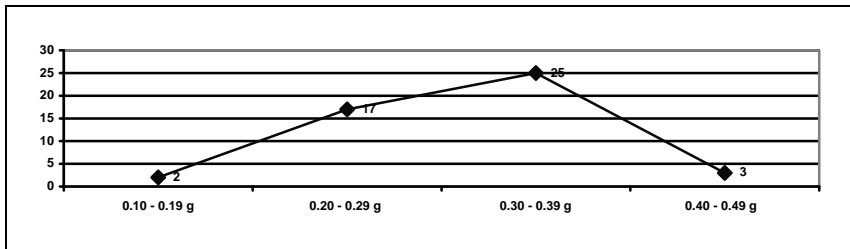


Fig. 7. Weight oscillation in *denarii*

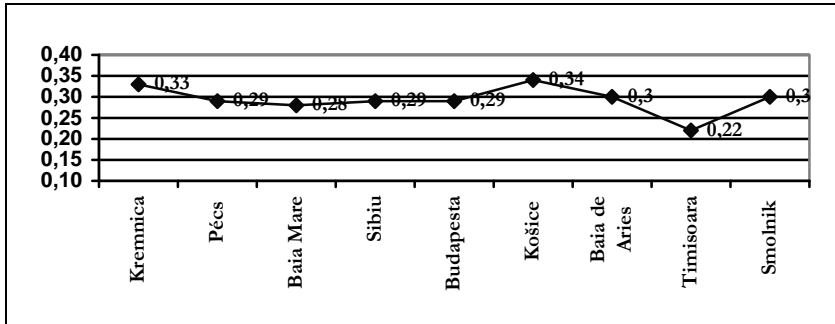


Fig. 8. Average weight oscillation in *denarii parvi* by mint

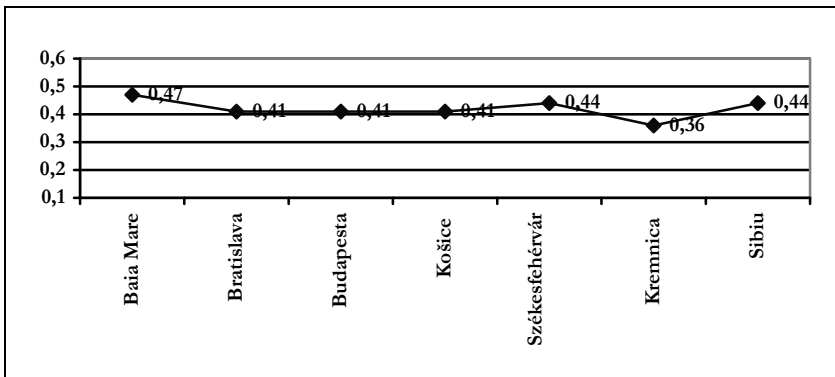


Fig. 9. Average weight oscillation in *quartings* by mint

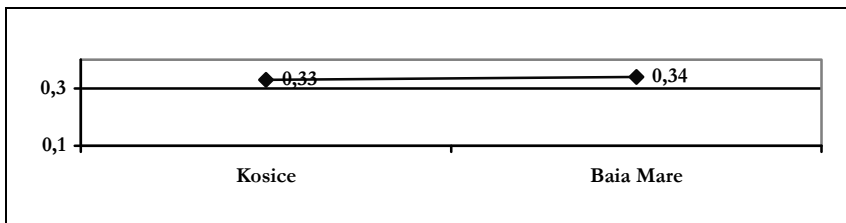


Fig. 10. Average weight oscillation in *denarii* by mint

## COINS CATALOGUE<sup>1</sup>

### *Denarii parvi*

No.	Weight (grams)	Diameter (cm)	Legend and marks
1	0.33	0.99 x 0.93	<b>K S K</b> -[V]-[R]
2	0.28	1.06 x 1.05	<b>K S K</b> V-R
3	0.38	1.01 x 0.95	<b>K S K</b> V-R
4	0.29	1.00 x 0.94	<b>K S K</b> V-[R]
5	0.28	0.91 x 0.90	<b>K S K</b> [V]-[R]
6	0.50	0.94 x 0.95	<b>K S K</b> [V]-[R]
7	0.32	0.98 x 0.98	<b>K S K</b> V-R
8	0.18	0.96 x 0.95	<b>K S K</b> [V]-[R]
9	0.34	1.07 x 0.97	<b>K S K</b> V-[R]

*Parvi* issued at Kremnica between 1387-1427.

Obv. Quartered shield with the horizontal bands of Hungary (fields 1 and 4) and the Moravian eagle (fields 2 and 3). Around the shield, S-V-R and marks.

Rev. Simple cross with a crown at each of the four ends.

Huszár, p. 94, no. 580; CNH, p. 104, no. 125A; Unger I, p. 140, no. 451; Pohl, 119-49.

10	0.30	1.05 x 0.91	<b>K S α</b> -[V]-[R]
11	0.36	0.99 x 0.92	<b>K S α</b> [V]-R
12	0.29	1.00 x 0.97	<b>K S α</b> [V]-[R]
13	0.34	0.93 x 0.84	<b>K S α</b> [V]-[R]
14	0.32	1.01 x 1.04	<b>K S α</b> -[V]-[R]
15	0.26	1.08 x 1.06	<b>K S α</b> [V]-R
16	0.40	0.91 x 0.98	<b>K S α</b> [V]-R

*Parvi* minted in Kremnica between 1387-1427. Town issue. Pohl, 119-48.

17	0.41	0.98 x 0.93	<b>ᵐ S K</b> V-[R]
----	------	-------------	--------------------

*Parvi* minted in Kremnica between 1387-1427. Moneyer, Markus of Nürnberg. Pohl, 119-52.

18	0.38	1.03 x 1.02	<b>K S?</b> V-R
19	0.48	0.94 x 0.87	<b>K S?</b> -[V]-[R]
20	0.21	0.98 x 0.86	<b>K S ?</b> [V]-[R]
21	0.29	0.92 x 0.98	?S <b>K</b> V-[R]
22	0.38	0.93 x 0.96	?S <b>K</b> V-R

*Parvi* minted in Kremnica between 1387-1427.

<sup>1</sup> The running number in the catalogue corresponds to the running number on the plates.

23	0.33	0.96 x 0.97	[S] <b>P</b> [V]-R
24	0.35	0.99 x 0.92	[S] <b>P</b> [V]-R
25	0.29	0.95 x 0.89	S <b>P</b> [V]-[R]
26	0.37	1.02 x 0.99	S <b>P</b> V-[R]
27	0.19	1.07 x 0.93	S <b>P</b> [V]-[R]
28	0.33	0.95 x 0.83	S <b>P</b> [V]-[R]
29	0.30	1.02 x 0.96	[S] <b>P</b> [V]-[R]
30	0.23	1.03 x 0.93	S <b>P</b> [V]-R
31	0.30	0.99 x 0.93	S <b>P</b> [V]-[R]
32	0.28	0.99 x 0.96	S <b>P</b> [V]-R
33	0.32	0.99 x 0.96	[S] <b>P</b> [V]-[R]
34	0.23	0.96 x 0.98	S <b>P</b> V-[R]
35	0.25	1.02 x 0.94	S <b>P</b> [V]-[R]
36	0.29	1.04 x 0.83	S <b>P</b> [V]-[R]
37	0.35	0.96 x 0.97	S <b>P</b> [V]-[R]
38	0.40	0.89 x 0.94	S <b>P</b> V-[R]
39	0.22	1.00 x 0.86	S <b>P</b> [V]-R
40	0.36	0.99 x 0.92	S <b>P</b> [V]-[R]
41	0.40	1.00 x 1.00	S <b>P</b> [V]-[R]
42	0.34	0.97 x 1.04	S <b>P</b> [V]-[R]
43	0.21	0.86 x 1.00	S <b>P</b> [V]-R
44	0.35	0.97 x 0.97	S <b>P</b> [V]-R
45	0.39	1.02 x 0.98	S <b>P</b> [V]-[R]
46	0.25	1.02 x 0.89	S <b>P</b> [V]-[R]
47	0.23	1.02 x 0.85	S <b>P</b> [V]-[R]
48	0.31	0.99 x 0.80	S <b>P</b> [V]-[R]
49	0.30	0.97 x 0.99	S <b>P</b> V-R
50	0.17	1.05 x 1.02	[S] <b>P</b> [V]-R
51	0.20	1.05 x 0.92	S <b>P</b> [V]-[R]
52	0.33	0.98 x 0.82	S <b>P</b> [V]-[R]
53	0.20	0.96 x 1.00	S <b>P</b> [V]-[R]
54	0.27	0.99 x 0.89	S <b>P</b> [V]-[R]
55	0.36	0.97 x 0.99	S <b>P</b> [V]-[R]
56	0.35	0.97 x 1.00	[S] <b>P</b> [V]-R
57	0.29	1.00 x 1.05	S <b>P</b> [V]-R
58	0.40	0.88 x 0.98	S <b>P</b> [V]-R
59	0.22	0.99 x 0.99	S <b>P</b> [V]-R
60	0.39	0.98 x 1.03	S <b>P</b> [V]-[R]
61	0.33	0.97 x 0.93	S <b>P</b> [V]-R
62	0.28	0.94 x 0.79	S <b>P</b> [V]-[R]
63	0.29	0.98 x 0.96	S <b>P</b> [V]-R
64	0.24	1.02 x 0.91	S <b>P</b> [V]-R
65	0.28	0.99 x 0.96	S <b>P</b> [V]-[R]

66	0.27	0.88 x 0.94	S <b>P</b> [V]-[R]
67	0.49	1.01 x 0.89	S <b>P</b> [V]-[R]
68	0.27	0.91 x 0.98	S <b>P</b> V-[R]
69	0.21	1.02 x 0.86	S <b>P</b> [V]-[R]
70	0.39	1.00 x 0.92	S <b>P</b> V-[R]
71	0.35	0.93 x 0.86	S <b>P</b> [V]-[R]
72	0.27	1.05 x 1.00	S <b>P</b> [V]-R
73	0.26	0.97 x 0.94	S <b>P</b> [V]-[R]
74	0.28	0.97 x 0.89	S <b>P</b> [V]-[R]
75	0.21	0.92 x 0.07	S <b>P</b> [V]-[R]
76	0.33	0.88 x 1.00	S <b>P</b> [V]-[R]
77	0.35	0.97 x 0.97	S <b>P</b> [V]-[R]
78	0.17	0.87 x 0.90	S <b>P</b> [V]-[R]
79	0.38	0.98 x 0.89	[S] <b>P</b> [V]-[R]
80	0.25	0.95 x 0.89	S <b>P</b> [V]-R
81	0.26	1.04 x 0.96	S <b>P</b> [V]-[R]
82	0.35	0.95 x 0.98	S <b>P</b> [V]-[R]
83	0.22	0.96 x 0.93	S <b>P</b> V-[R]
84	0.23	0.94 x 0.92	S <b>P</b> [V]-[R]
85	0.28	1.04 x 0.89	S <b>P</b> [V]-[R]
86	0.34	1.07 x 0.83	S <b>P</b> [V]-R
87	0.33	0.94 x 0.95	S <b>P</b> [V]-R
88	0.39	0.99 x 0.88	S <b>P</b> [V]-R
89	0.27	0.99 x 1.00	S <b>P</b> [V]-R
90	0.38	0.96 x 0.97	S <b>P</b> [V]-[R]
91	0.31	0.94 x 1.06	S <b>P</b> V-[R]
92	0.24	1.00 x 1.01	S <b>P</b> [V]-R
93	0.25	1.04 x 1.03	<b>P</b> S-[V]-[R]
94	0.16	0.97 x 0.93	[S] <b>P</b> [V]-[R]
95	0.31	0.88 x 0.94	[S] <b>P</b> [V]-[R]
96	0.29	0.99 x 0.89	[S] <b>P</b> [V]-[R]
97	0.32	0.93 x 0.96	[S] <b>P</b> [V]-R
98	0.26	0.89 x 0.94	[S] <b>P</b> [V]-R
99	0.47	0.99 x 0.97	S <b>P</b> [V]-[R]
100	0.38	0.99 x 1.02	[S] <b>P</b> [V]-[R]
101	0.20	1.09 x 1.05	S <b>P</b> [V]-[R]
102	0.30	0.84 x 0.97	S <b>P</b> [V]-[R]
103	0.25	1.02 x 0.93	[S] <b>P</b> [V]-[R]
104	0.22	0.91 x 0.78	[S] <b>P</b> [V]-[R]
105	0.31	0.97 x 1.01	[S] <b>P</b> [V]-[R]
106	0.19	0.97 x 0.95	[S] <b>P</b> [V]-[R]
107	0.30	0.96 x 0.89	[S] <b>P</b> [V]-[R]
108	0.31	0.90 x 0.95	[S] <b>P</b> [V]-[R]
109	0.33	0.96 x 1.08	S <b>P</b> [V]-[R]

110	0.29	1.02 x 1.02	S <b>P</b> V-[R] (mis-struck)
111	0.29	0.95 x 1.01	S <b>P</b> [V]-[R] (mis-struck)

*Parvi* minted in Pécs between 1387-1427. Pohl, 119-15.

112	0.34	1.04 x 1.01	<b>P</b> S <b>B</b> V-[R]
113	0.38	0.94 x 0.96	<b>P</b> S <b>B</b> V-[R]

*Parvi* minted in Pécs between 1387-1427. Pohl, 119-61.

114	0.28	1.27 x 1.19	★ [S]-V-[R]
115	0.17	1.00 x 1.00	★ S-[V]-[R]
116	0.36	1.21 x 1.07	S ★ V-[R]
117	0.29	1.11 x 1.06	[S] ★ [V]-[R]
118	0.22	0.95 x 0.96	S ★ [V]-[R]
119	0.27	1.14 x 1.18	★ [S]-[V]-R
120	0.28	1.11 x 1.02	S ★ V-R
121	0.26	1.01 x 0.94	S ★ V-[R]
122	0.41	0.97 x 0.98	S ★ V-[R]
123	0.31	0.89 x 0.96	S ★ [V]-[R]
124	0.26	1.06 x 1.05	[S] ★ [V]-[R]
125	0.36	1.05 x 0.99	[S] ★ [V]-[R]

*Parvi* minted in Baia Mare between 1387-1427. Pohl, 119-24.

126	0.29	0.97 x 0.85	[S]-[V]-[R] <b>ŋ</b> on the reverse
127	0.28	0.92 x 0.85	[S]-[V]-[R] <b>ŋ</b> on the reverse
128	0.24	0.97 x 0.90	<b>ŋ</b> on the reverse (mis-struck)

*Parvi* minted in Baia Mare between 1387-1427. Pohl, 119-77.

129	0.28	1.19 x 1.15	S-V-R <b>ŋ</b> on the reverse, on the cross
130	0.28	1.10 x 1.23	S-V-[R] <b>ŋ</b> on the reverse, on the cross
131	0.25	0.93 x 0.94	S-V-[R] <b>ŋ</b> on the reverse, on the cross

*Parvi* minted in Baia Mare between 1387-1427. Pohl, 119-78.

132	0.22	1.03 x 1.01	[S] <b>h</b> [V]-[R]
133	0.36	0.96 x 0.99	S <b>h</b> [V]-[R]

*Parvi* minted in Sibiu between 1387-1427. Pohl, 119-8.

134	0.27	0.98 x 0.98	☉ [S]-[V]-[R]
135	0.27	1.02 x 1.04	S ☉ V-[R]
136	0.32	1.07 x 0.94	☉ S-V-[R]

*Parvi* minted in Buda between 1418-1424. Moneyer, Onofrio Bardi. Pohl, 119-30.



137	0.28	1.04 x 1.01	♣ S ♣ [V]-R
138	0.24	1.02 x 0.99	♣ S ♣ V-[R]
139	0.36	0.94 x 1.00	♣ S ♣ [V]-[R]
140	0.23	0.94 x 0.92	♣ S ♣ -[V]-[R]
141	0.37	1.01 x 0.96	♣ S ♣ V-[R]
142	0.33	0.99 x 0.97	♣ S ♣ -[V]-R
143	0.25	0.95 x 0.83	♣ S ♣ -V-[R]
144	0.34	1.04 x 0.99	♣ S ♣ -V-R
145	0.34	0.97 x 1.03	♣ S ♣ -V-[R]
146	0.35	0.96 x 1.00	♣ S ♣ -V-[R]
147	0.26	0.84 x 1.02	♣ S ♣ [V]-[R]
148	0.27	0.94 x 0.96	♣ S ♣ V-[R]
149	0.19	0.94 x 0.94	♣ S ♣ [V]-[R]
150	0.27	0.98 x 1.00	♣ S ♣ -V-[R]

*Parvus* minted in Buda between 1418-1424. Moneyer, Onofrio Bardi. Pohl, 119-70.

151	0.39	0.99 x 0.95	S ♣ [V]-R
-----	------	-------------	-----------

*Parvus* minted in Buda between 1418-1424. Moneyer, Onofrio Bardi. Pohl, 119-29.

152	0.29	0.99 x 1.04	℣ [S] ♣ [V]-[R]
153	0.35	0.98 x 0.98	℣ [S] ♣ [V]-[R]

*Parvi* minted in Buda between 1418-1424. Moneyer, Onofrio Bardi. Pohl, 119-73.

154	0.27	0.99 x 0.98	S α [V]-R
-----	------	-------------	-----------

*Parvus* minted in Košice between 1387-1427. Pohl, 119-6.

155	0.40	0.93 x 1.03	α S I [V]-[R]
156	0.32	0.97 x 1.01	I S V-R
157	0.40	1.07 x 1.04	I S α V-[R]
158	0.34	1.05 x 0.98	I S V-[R]

*Parvi* minted in Košice before de 1410. Moneyers, Iacobus and Christianus. Pohl, 119-46.

159	0.30	0.92 x 1.00	♠ S-[V]-R
160	0.36	1.05 x 1.02	♠ S-V-R
161	0.33	0.93 x 0.99	♠ S [V]-[R]
162	0.29	1.01 x 1.01	S ♠ V-[R]
163	0.39	1.09 x 1.07	♠ S-V-[R]
164	0.31	1.04 x 1.01	S ♠ [V]-R
165	0.24	1.21 x 1.18	[S] ♠ [V]-R
166	0.29	0.98 x 0.98	♠ S-[V]-[R]
167	0.39	1.03 x 1.03	♠ S-V-[R]
168	0.24	0.99 x 0.97	♠ S-V-[R]
169	0.34	1.01 x 1.00	♠ [S]-V-[R]
170	0.35	1.07 x 1.02	♠ S-V-[R]

171	0.22	1.09 x 1.01	⓪ S-V-[R]
172	0.33	1.06 x 1.04	S ⓪ [V]-R
173	0.36	0.99 x 1.01	⓪ [S]-[V]-[R]
174	0.29	0.97 x 0.96	⓪ S-V-[R]
175	0.29	1.07 x 1.04	S ⓪ [V]-[R]
176	0.28	1.01 x 0.94	⓪ S-[V]-[R]
177	0.39	1.05 x 1.09	⓪ S-[V]-[R]
178	0.28	1.02 x 1.04	⓪ S-[V]-R
179	0.25	1.04 x 0.96	⓪ S-[V]-[R]
180	0.27	1.05 x 1.00	⓪ S-V-[R]
181	0.33	1.02 x 0.94	⓪ S-[V]-R
182	0.43	1.08 x 1.11	S ⓪ [V]-R (mis-struck)
183	0.28	0.99 x 1.14	S ⓪ [V]-[R] (mis-struck)
184	0.25	0.97 x 0.96	[S] ⓪ V-[R] (mis-struck)

*Parni* minted in Baia de Arieş between 1387-1427. Pohl, 119-14.

185	0.44	0.96 x 0.94	⓪ S • [V]-[R]
186	0.29	0.93 x 0.89	⓪ S • [V]-R
187	0.26	0.95 x 0.91	⓪ S • [V]-[R]
188	0.27	1.06 x 0.92	⓪ S • [V]-R
189	0.26	1.05 x 0.99	⓪ S • V-R
190	0.22	1.04 x 1.08	⓪ S • [V]-R

*Parni* minted in Baia de Arieş between 1387-1427. Pohl, 119-60.

191	0.22	1.20 x 1.27	ⓧ S-[V]-R
192	0.24	1.10 x 1.28	ⓧ S-V-R
193	0.22	1.14 x 1.16	ⓧ S-V-R
194	0.30	1.18 x 1.10	ⓧ S-V-R
195	0.26	1.02 x 1.05	ⓧ S-V-[R]
196	0.13	0.88 x 0.79	ⓧ S-[V]-[R]

*Parni* minted in Timișoara? between 1387-1427. Pohl, 119-16.

197	0.17	1.11 x 1.14	• S • V-[R]
198	0.40	1.01 x 1.01	• S • V-[R]
199	0.31	0.98 x 1.11	• S • V-R
200	0.31	1.04 x 1.01	• S • V-R
201	0.20	0.93 x 0.95	• S • V-[R]
202	0.34	0.99 x 0.97	• S • [V]-R
203	0.30	1.04 x 1.01	• S • [V]-[R]
204	0.31	1.08 x 0.97	• S • V-[R]
205	0.32	0.90 x 0.95	• S • V-[R]
206	0.32	0.93 x 0.92	• S • [V]-[R]
207	0.17	0.94 x 0.92	• S • [V]-[R]
208	0.33	1.00 x 1.00	• S • V-R
209	0.31	1.08 x 1.07	• S • [V]-[R]
210	0.25	0.99 x 0.97	• S • [V]-R
211	0.38	0.97 x 1.07	• S • -V-R

212	0.33	1.01 x 1.05	• S • V-[R]
213	0.34	1.02 x 0.96	• S • [V]-R
214	0.33	1.02 x 1.00	• S • V-R
215	0.24	0.97 x 0.98	• S • V-[R]
216	0.38	0.98 x 1.00	• S • V-R
217	0.35	1.00 x 0.87	• S • [V]-[R]

*Parvi* minted in Smolnik between 1390-1427. Pohl, 117-8.

218	0.39	1.02 x 0.97	<b>ᵐ</b> S 7 [V]-R
219	0.35	0.98 x 1.01	<b>ᵐ</b> S 7 V-[R]
220	0.29	0.96 x 0.98	<b>ᵐ</b> S 7 V-R
221	0.47	0.97 x 0.97	<b>ᵐ</b> S 7 [V]-R

*Parvi* minted between 1404-1405. Unknown mint. Moneyer, Markus of Nürnberg. Pohl, 119-56.

222	0.29	0.90 x 0.97	<b>ᵐ</b> S 6 V-[R]
223	0.41	0.96 x 0.96	<b>ᵐ</b> S 6 V-[R]

*Parvi* minted between 1404-1405. Unknown mint. Moneyer, Markus din Nürnberg. Pohl, 119-55.

224	0.22	0.93 x 0.96	S <b>ƙ</b> [V]-[R]
-----	------	-------------	--------------------

*Parvus* minted between 1387-1427. Unknown mint. Moneyer, Ulrich Kamerer. Pohl, 119-32.

225	0.37	1.19 x 1.15	<b>7</b> S-V-[R]
226	0.30	1.04 x 1.01	S <b>7</b> V-[R]
227	0.33	0.97 x 0.96	S <b>7</b> -V-[R]
228	0.26	1.03 x 1.07	S <b>7</b> -[V]-[R]

*Parvi* minted between 1387-1427. Unknown mint. Pohl, 119-21.

229	0.32	1.09 x 1.05	S <b>ᵐ</b> [V]-[R]
230	0.27	1.17 x 1.16	S <b>ᵐ</b> V-R
231	0.34	1.07 x 1.10	S <b>ᵐ</b> [V]-[R]
232	0.30	1.04 x 1.04	S <b>ᵐ</b> V-[R]
233	0.30	1.16 x 1.15	S <b>ᵐ</b> V-[R]
234	0.32	1.05 x 1.03	[S] <b>ᵐ</b> [V]-R
235	0.28	1.01 x 0.97	<b>ᵐ</b> S-V-[R]
236	0.24	1.08 x 1.00	S <b>ᵐ</b> [V]-R
237	0.34	0.97 x 0.99	S <b>ᵐ</b> [V]-[R]
238	0.34	1.00 x 0.99	S <b>ᵐ</b> [V]-R
239	0.25	0.98 x 0.98	S <b>ᵐ</b> [V]-R

*Parvi* minted between 1387-1427. Unknown mint. Pohl, 119-12.

240	0.46	1.04 x 1.02	S <b>I</b> [V]-[R]
-----	------	-------------	--------------------

241	0.27	0.98 x 1.02	S <b>I</b> V-R
242	0.25	0.97 x 0.83	[S] <b>I</b> [V]-R
243	0.36	0.92 x 0.98	S <b>I</b> V-[R]
244	0.34	0.88 x 0.97	S <b>I</b> [V]-[R]

*Parvi* minted between 1387-1427. Unknown mint. Pohl, 119-9.

245	0.32	1.01 x 1.04	<b>9</b> S-[V]-R
-----	------	-------------	------------------

*Parvus* minted between 1387-1427. Unknown mint. Pohl, 119-22.

246	0.36	1.07 x 1.10	<b>Ɔ</b> S <b>o</b> V-[R] (mis-struck)
-----	------	-------------	--

*Parvus* minted between 1387-1427. Unknown mint. Pohl, 119-51.

247	0.26	0.96 x 1.03	<b>大</b> S <b>o</b> V-[R]
248	0.34	0.95 x 0.94	<b>大</b> S <b>o</b> [V]-[R]
249	0.28	0.88 x 0.94	<b>大</b> S <b>o</b> V-[R]
250	0.21	1.05 x 0.92	<b>大</b> S <b>o</b> [V]-[R]
251	0.31	0.94 x 0.91	<b>大</b> S <b>o</b> [V]-[R]
252	0.18	0.93 x 0.95	<b>大</b> S <b>o</b> [V]-[R]
253	0.24	0.94 x 0.93	<b>大</b> S <b>o</b> [V]-R

*Parvi* minted between 1387-1427. Unknown mint. Pohl, 119-67.

254	0.26	1.05 x 1.01	<b>T</b> S <b>o</b> [V]-[R]
255	0.37	0.97 x 0.94	<b>T</b> S <b>o</b> [V]-[R]
256	0.40	1.00 x 1.04	<b>T</b> S <b>o</b> V-[R]
257	0.23	0.97 x 0.77	<b>T</b> S <b>o</b> [V]-[R]

*Parvi* minted between 1387-1427. Unknown mint. Pohl, 119-64.

258	0.24	1.08 x 1.05	<b>o</b> S-V-R
259	0.44	0.91 x 1.08	S <b>o</b> [V]-[R]
260	0.25	0.99 x 0.95	<b>o</b> S-V-[R]
261	0.21	1.00 x 1.00	[S] <b>o</b> [V]-R (mis-struck)

*Parvi* minted between 1387-1427. Unknown mint. Pohl, 119-31.

262	0.37	1.15 x 1.03	S <b>v</b> [V]-[R]
263	0.34	1.10 x 1.07	<b>v</b> [S]-V-[R] (mis-struck)

*Parvi* minted between 1387-1427. Unknown mint. Pohl, 119-18.

264	0.34	1.21 x 1.21	<b>u</b> S-V-R
265	0.32	1.17 x 1.10	<b>u</b> S-V-R

*Parvi* minted between 1387-1427. Unknown mint. Pohl, 119-27.

266	0.33	1.19 x 1.13	[S]-V-R <b>m</b> below the shield
267	0.46	1.08 x 1.13	S-V-R <b>m</b> below the shield
268	0.26	1.12 x 1.11	S-V-R <b>m</b> below the shield
269	0.23	0.96 x 1.03	[S]-[V]-R <b>m</b> below the shield

270	0.19	1.00 x 1.13	S-V-R <b>ᵐ</b> below the shield
271	0.34	1.24 x 1.11	S-V-R <b>ᵐ</b> below the shield (mis-struck)

*Parvi* minted between 1387-1427. Unknown mint. Pohl, 119-39.

272	0.29	1.10 x 1.10	S-V-R <b>ᵐ</b> below the shield, <b>ᵒ</b> on the cross
273	0.28	1.20 x 1.13	S-V-[R] <b>ᵐ</b> below the shield, <b>ᵒ</b> on the cross

*Parvi* minted between 1387-1427. Unknown mint.



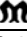
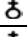
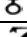

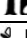

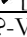

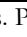
274	0.24	1.16 x 1.18	S-V-R •• below the shield
275	0.43	1.16 x 1.18	S-V-R •• below the shield
276	0.34	1.18 x 1.11	S-V-[R] •• below the shield
277	0.30	1.10 x 1.13	S-V-R •• below the shield
278	0.34	1.17 x 1.21	S-V-R •• below the shield
279	0.27	1.10 x 1.10	S-V-R •• below the shield
280	0.34	1.22 x 1.15	S-V-[R] •• below the shield
281	0.25	1.04 x 0.96	[S]-V-[R] •• below the shield
282	0.26	1.12 x 1.18	[S]-V-[R] •• below the shield
283	0.27	1.05 x 1.06	S-[V]-R •• below the shield
284	0.19	1.17 x 1.24	S-V-R •• below the shield (mis-struck)

*Parvi* minted between 1387-1427. Unknown mint. Pohl, 119-43.

285	0.36	1.01 x 0.97	S-V-[R] on the reverse, c <b>ᵒ</b> (mis-struck)
-----	------	-------------	---

*Parvus* minted between 1387-1427. Unknown mint.

286	0.37	0.97 x 1.05	ᵒS • V-R
287	0.28	0.98 x 0.93	ᵒ[S] • [V]-R
288	0.33	0.99 x 0.98	ᵒS • V-R
289	0.30	0.98 x 0.85	S • [V]-[R]
290	0.36	0.96 x 0.97	ᵒS <b>B</b> [V]-R
291	0.24	0.91 x 1.00	ᵒS <b>B</b> [V]-R
292	0.20	0.99 x 1.00	[S] <b>B</b> [V]-[R]
293	0.34	1.02 x 1.02	ᵒS <b>α</b> [V]-R
294	0.32	1.02 x 0.98	ᵒS <b>α</b> V-[R]
295	0.22	1.02 x 0.99	ᵒS <b>α</b> [V]-[R]
296	0.29	1.00 x 0.85	ᵒS <b>α</b> [V]-[R]
297	0.28	0.93 x 0.91	ᵒS <b>α</b> [V]-[R]
298	0.26	0.97 x 0.97	ᵒS <b>α</b> [V]-[R]
299	0.26	0.97 x 0.96	<b>α</b> [S]ᵒ-[V]-[R]
300	0.37	1.10 x 1.00	ᵒ Sᵒ-[V]-[R]
301	0.29	1.01 x 1.00	ᵒ Sᵒ-[V]-[R]
302	0.29	1.05 x 1.02	ᵒ S-V-R
303	0.23	1.02 x 0.97	ᵒ Sᵒ [V]-R
304	0.25	1.04 x 1.02	ᵒ [S]ᵒ-V-[R]

305	0.22	1.00 x 1.01	?[S]  [V]-R
306	0.38	0.99 x 0.97	?S  [V]-[R]
307	0.17	1.02 x 0.99	 S? V-[R]
308	0.26	0.88 x 1.02	?[S]  V-[R]
309	0.25	1.10 x 0.91	?[S]  [V]-[R] (mis-struck)
310	0.26	0.99 x 1.05	?[S]  [V]-R
311	0.40	0.90 x 0.96	?[S]  [V]-[R]
312	0.40	1.02 x 1.00	?S  [V]-[R]
313	0.32	0.95 x 0.99	? S  [V]-R
314	0.27	1.04 x 1.02	 S?-V-R
315	0.34	1.05 x 0.99	 S?V-R

*Parsi* minted between 1387-1427. Unknown mints. Partially legible marks.

316	0.19	0.81 x 0.77	S-[V]-[R]
317	0.36	1.02 x 1.03	S-V-[R]
318	0.31	1.17 x 1.16	S-V-R
319	0.33	1.24 x 1.12	S-V-R
320	0.33	1.13 x 1.10	S-V-R
321	0.31	1.02 x 1.04	S-V-[R]
322	0.36	1.06 x 1.06	S-V-R
323	0.34	1.11 x 1.10	S-V-R
324	0.44	1.19 x 1.16	S-V-R
325	0.31	1.07 x 1.08	S-[V]-R
326	0.37	1.10 x 1.09	S-[V]-R
327	0.31	1.12 x 1.03	S-V-[R]
328	0.31	1.11 x 0.97	S-[V]-[R]
329	0.30	1.10 x 1.18	S-V-R
330	0.28	0.95 x 0.94	S-V-R
331	0.24	1.13 x 1.03	S-[V]-[R]
332	0.41	1.14 x 1.13	S-V-R
333	0.56	1.20 x 1.17	S-V-R
334	0.29	1.06 x 1.05	S-V-R
335	0.35	1.16 x 1.18	S-V-R
336	0.46	0.99 x 1.08	S-V-R
337	0.33	1.09 x 1.04	S-V-R
338	0.36	1.16 x 1.20	S-V-R
339	0.29	1.00 x 0.97	S-V-[R]
340	0.39	0.97 x 0.93	S-V-[R]
341	0.32	0.99 x 1.05	S-V-R
342	0.35	1.02 x 1.08	S-V-R
343	0.32	0.94 x 0.96	S-V-R
344	0.35	1.12 x 1.13	S-V-R
345	0.25	1.08 x 1.13	S-V-R
346	0.29	1.07 x 1.08	S-V-R
347	0.33	1.10 x 1.02	S-V-R
348	0.29	1.06 x 1.01	S-V-R

349	0.33	1.23 x 1.16	S-V-R
350	0.31	1.24 x 1.38	S-V-[R]
351	0.28	0.94 x 0.94	S-V-[R]
352	0.30	1.08 x 1.09	S-V-R
353	0.25	0.97 x 0.99	S-V-[R]
354	0.26	0.94 x 1.02	S-V-[R]
355	0.34	0.98 x 1.03	S-V-[R]
356	0.25	1.00 x 0.97	S-[V]-[R]
357	0.37	0.98 x 1.00	S-V-[R]
358	0.37	1.01 x 1.05	S-V-R
359	0.27	1.09 x 1.09	S-V-R
360	0.34	0.99 x 0.94	S-[V]-R
361	0.40	0.99 x 0.96	S-V-R
362	0.19	0.94 x 0.99	S-[V]-R
363	0.38	1.13 x 1.10	S-V-[R]
364	0.39	0.99 x 0.99	S-V-[R]
365	0.30	0.98 x 0.96	S-V-R
366	0.34	1.14 x 1.11	S-[V]-R
367	0.33	0.91 x 0.95	S-V-[R]
368	0.22	1.19 x 1.15	S-V-R
369	0.38	0.91 x 0.95	S-[V]-R
370	0.43	0.99 x 0.95	S-[V]-R
371	0.22	1.02 x 1.11	S-V-R
372	0.38	1.10 x 1.10	S-V-R
373	0.21	1.07 x 1.05	S-[V]-[R]
374	0.25	0.94 x 0.97	S-V-[R]
375	0.43	1.10 x 1.05	S-V-R
376	0.36	1.02 x 0.93	S-V-[R]
377	0.30	1.02 x 1.01	S-V-[R]
378	0.32	0.98 x 0.84	S-V-[R]
379	0.29	0.95 x 0.95	S-[V]-[R]
380	0.33	0.89 x 0.97	S-V-[R]
381	0.37	0.90 x 0.89	S-[V]-R
382	0.27	0.97 x 0.81	S-V-[R]
383	0.29	0.98 x 0.88	S-V-[R]
384	0.36	0.97 x 0.95	S-V-[R]
385	0.43	0.99 x 1.00	S-[V]-[R]
386	0.34	1.02 x 0.88	S-[V]-R
387	0.51	1.04 x 1.04	S-V-R
388	0.21	1.00 x 0.99	S-[V]-R (mis-struck)
389	0.28	1.16 x 1.17	S-V-R (mis-struck)
390	0.25	1.10 x 1.11	S-V-R (mis-struck)
391	0.25	1.16 x 1.14	S-V-R (mis-struck)
392	0.34	1.11 x 1.16	S-V-R (mis-struck)
393	0.33	1.13 x 1.12	S-[V]-R (mis-struck)

*Parsi* minted between 1387-1427. Unknown mint. No marks. Pohl, 191-1.

394	0.33	1.00 x 1.01	?[S]?-V-[R]
395	0.29	1.07 x 1.08	[S]?-[V]-[R]
396	0.34	0.95 x 0.95	?[S]?-[V]-[R]
397	0.44	0.99 x 0.92	[S]-[V]-[R]
398	0.25	1.02 x 0.99	S?-V-[R]
399	0.24	1.07 x 1.08	[S]-V-R
400	0.35	1.01 x 1.02	?[S]?-V-R
401	0.25	0.95 x 0.95	S?-[V]-[R]
402	0.25	0.99 x 0.94	[S]-V-[R]
403	0.12	1.18 x 1.13	?S-[V]-[R]
404	0.33	1.00 x 0.91	S?-V-[R]
405	0.36	1.04 x 0.92	S?-V-[R]
406	0.34	1.01 x 1.01	[S]?-[V]-R
407	0.26	1.01 x 1.03	S?-V-[R]
408	0.30	1.05 x 1.05	[S]?-V-R
409	0.42	1.08 x 1.13	S-V-R
410	0.37	0.93 x 0.91	?S?-[V]-[R]
411	0.36	1.00 x 0.97	?[S]?-[V]-[R]
412	0.25	1.05 x 1.04	S?-V-R
413	0.35	0.94 x 0.97	?[S]?-V-[R]
414	0.38	1.04 x 1.00	?S?-[V]-R
415	0.20	1.02 x 0.78	S?-[V]-R
416	0.23	0.90 x 0.94	S-[V]-[R]
417	0.43	0.91 x 0.97	S?-V-[R]
418	0.31	0.97 x 0.99	?S-[V]-[R]
419	0.25	1.02 x 1.00	?S?-[V]-[R]
420	0.22	0.99 x 0.98	?S?-V-[R]
421	0.31	0.99 x 0.92	?S?-V-[R]
422	0.28	0.99 x 0.98	?S?-[V]-[R]
423	0.30	0.94 x 0.95	?S-V-R
424	0.31	1.04 x 0.99	?S-[V]-R
425	0.37	0.98 x 0.94	S?-V-[R]
426	0.30	0.97 x 0.91	S?-V-[R]
427	0.31	1.04 x 0.95	?S?-V-[R]
428	0.33	0.99 x 1.04	S?-V-R
429	0.27	0.88 x 1.04	?S?-V-R
430	0.28	0.96 x 1.03	?[S]-V-R
431	0.33	0.95 x 1.03	?[S]?-V-R
432	0.27	1.04 x 1.03	[S]?-V-[R]
433	0.31	1.05 x 1.01	S?-V-[R]
434	0.38	0.96 x 0.99	?[S]?-V-[R]
435	0.24	0.89 x 0.97	S?-V-[R]
436	0.25	0.96 x 1.07	?S?-[V]-R
437	0.28	0.95 x 1.05	?S?-V-[R]
438	0.36	0.98 x 0.93	?S?-V-[R]
439	0.28	0.90 x 0.96	[S]?-[V]-[R]
440	0.25	1.01 x 1.02	[S]-V-[R]



441	0.25	0.94 x 1.00	?[S]?-[V]-R
442	0.36	0.99 x 1.03	[S]-[V]-R
443	0.31	0.97 x 0.97	[S]?-[V]-[R]
444	0.25	1.07 x 0.98	?S-[V]-R
445	0.32	1.06 x 1.08	?S?-[V]-R
446	0.36	0.91 x 0.96	?S?-V-R
447	0.28	1.03 x 1.04	?S?-V-R
448	0.44	0.94 x 0.97	?S?-[V]-[R]
449	0.27	0.98 x 0.99	?S?-[V]-R
450	0.27	0.96 x 0.88	?[S]?-V-[R]
451	0.30	0.95 x 1.02	?[S]?-V-[R]
452	0.34	0.99 x 1.01	?S?-[V]-[R]
453	0.27	1.02 x 0.96	?[S]?-[V]-R
454	0.34	0.96 x 0.99	?S-[V]-R
455	0.33	0.97 x 1.05	?S-[V]-R
456	0.29	0.99 x 0.92	?S?-[V]-[R]
457	0.25	0.98 x 0.95	?S?-[V]-[R]
458	0.26	0.97 x 0.89	?S?-V-[R]
459	0.21	0.98 x 1.01	?[S]?-[V]-[R]
460	0.46	0.99 x 0.99	S?-[V]-[R]
461	0.27	0.85 x 1.00	S?-[V]-[R]
462	0.38	0.84 x 0.87	?[S]?-V-R
463	0.18	1.05 x 0.87	?S-[V]-R
464	0.26	1.00 x 0.95	[S]-[V]-[R]
465	0.30	1.03 x 1.03	?S-[V]-R
466	0.34	1.01 x 0.99	S?-V-[R]
467	0.39	0.90 x 1.02	S?-V-[R]
468	0.28	1.21 x 1.22	?S-V-R
469	0.47	0.94 x 1.02	S?-V-[R]
470	0.19	1.02 x 0.94	S?-V-[R]
471	0.31	1.02 x 1.01	S?-V-R
472	0.36	0.97 x 0.91	?S?-[V]-[R]
473	0.33	0.97 x 1.02	S?-V-[R]
474	0.35	1.06 x 1.04	S?-V-R
475	0.28	0.88 x 1.03	?S? [V]-R
476	0.27	0.94 x 0.96	?S?-[V]-[R]
477	0.34	0.96 x 1.01	?S?-V-[R]
478	0.25	1.03 x 1.00	?S-[V]-R
479	0.28	0.97 x 0.86	S?-[V]-[R]
480	0.24	0.97 x 0.91	?[S]?-[V]-[R]
481	0.29	0.88 x 0.96	S-V-[R]
482	0.22	0.85 x 0.95	[S]-[V]-R
483	0.35	1.01 x 1.02	?[S]?-[V]-[R]
484	0.22	0.93 x 1.02	?[S]?-V-[R]
485	0.34	0.81 x 0.83	?[S]?-V-[R]
486	0.20	1.03 x 0.96	?[S]?-[V]-[R]
487	0.34	0.92 x 0.89	[S]-V-[R]

488	0.27	0.89 x 0.99	[S]-[V]-[R]
489	0.37	1.01 x 1.01	[S]-[V]-[R]
490	0.22	0.94 x 1.02	[S]-[V]-R
491	0.35	0.97 x 0.91	S-[V]-[R]
492	0.24	1.12 x 1.09	[S]-[V]-R
493	0.27	0.94 x 0.93	[S]-[V]-[R]
494	0.25	0.95 x 0.93	[S]-[V]-[R]
495	0.39	0.90 x 0.99	[S]-[V]-[R]
496	0.39	0.92 x 0.88	[S]-[V]-[R]
497	0.24	0.94 x 0.95	[S]-[V]-R
498	0.30	0.98 x 0.99	[S]-[V]-R
499	0.31	1.05 x 0.96	?[S]?-[V]-[R]
500	0.35	0.90 x 0.92	[S]-V-[R]
501	0.26	0.99 x 0.90	[S]-[V]-R
502	0.36	0.89 x 1.11	[S]-V-R
503	0.19	0.94 x 0.92	[S]-[V]-R
504	0.31	0.95 x 0.90	[S]-[V]-[R]
505	0.15	1.06 x 0.98	?[S]?-[V]-[R]
506	0.37	1.04 x 1.09	[S]-V-R
507	0.25	1.06 x 1.07	S-[V]-R
508	0.38	1.02 x 1.01	[S]-V-R
509	0.19	0.98 x 0.95	[S]-V-R
510	0.24	0.95 x 0.99	[S]?-[V]-[R]
511	0.36	1.01 x 1.01	[S]-[V]-R
512	0.40	0.94 x 1.00	S?-[V]-R
513	0.30	0.88 x 0.99	[S]-[V]-[R]
514	0.30	1.03 x 0.92	[S]-[V]-[R]
515	0.23	0.78 x 1.01	[S]-[V]-R
516	0.31	1.03 x 1.01	S?-[V]-[R]
517	0.24	1.05 x 0.91	[S]-V-[R]
518	0.36	1.02 x 1.02	[S]-[V]-[R]
519	0.29	1.00 x 1.00	[S]-V-[R]
520	0.23	0.91 x 0.99	[S]-[V]-[R]
521	0.33	0.91 x 0.95	[S]-V-[R]
522	0.26	0.98 x 1.01	?[S]-[V]-[R]
523	0.32	0.92 x 0.91	[S]-[V]-[R]
524	0.28	1.11 x 1.05	S-[V]-[R]
525	0.35	1.00 x 1.03	[S]-[V]-R
526	0.21	0.99 x 1.02	[S]-[V]-[R]
527	0.33	0.83 x 0.95	[S]-[V]-[R]
528	0.23	0.88 x 0.98	[S]-V-[R]
529	0.25	1.02 x 0.97	[S]-[V]-[R]
530	0.27	1.04 x 0.87	[S]-[V]-R
531	0.21	0.92 x 0.88	[S]-[V]-R
532	0.20	0.96 x 1.05	[S]-[V]-[R]
533	0.25	0.97 x 0.97	[S]-V-[R]
534	0.37	1.00 x 1.01	[S]-[V]-R

535	0.30	1.01 x 1.02	[S]-[V]-[R]
536	0.33	0.99 x 0.92	S-[V]-R
537	0.24	1.02 x 0.99	[S]-[V]-[R]
538	0.28	0.98 x 0.85	[S]-[V]-[R]
539	0.21	1.02 x 1.01	[S]-V-[R]
540	0.28	1.03 x 0.89	[S]-V-[R]
541	0.38	0.97 x 0.98	[S]-[V]-[R]
542	0.30	0.97 x 0.96	[S]-[V]-R
543	0.29	0.94 x 0.94	?[S]-[V]-R
544	0.26	0.88 x 0.93	S-[V]-[R]
545	0.33	0.97 x 0.94	[S]-[V]-[R]
546	0.40	0.99 x 0.99	[S]-[V]-R
547	0.41	0.94 x 0.96	[S]-[V]-R
548	0.29	1.00 x 0.83	?S-[V]-[R]
549	0.27	0.92 x 0.97	[S]-[V]-[R]
550	0.27	0.93 x 1.03	S?-V-R
551	0.18	1.03 x 0.88	S?-V-R
552	0.31	0.99 x 0.99	[S]-V-[R]
553	0.36	0.97 x 0.88	S-[V]-[R]
554	0.29	0.91 x 0.98	[S]-V-[R]
555	0.20	1.02 x 1.02	[S]-V-[R]
556	0.17	0.90 x 0.94	?[S]?-[V]-[R]
557	0.22	1.04 x 1.01	S?-[V]-R
558	0.28	0.98 x 1.04	[S]?-V-R
559	0.40	0.95 x 0.94	[S]?-[V]-R
560	0.27	0.99 x 0.95	[S]-V-[R]
561	0.31	0.95 x 0.98	[S]-V-[R]
562	0.33	0.94 x 0.88	[S]-V-[R]
563	0.33	0.94 x 0.95	[S]-[V]-[R]
564	0.26	0.95 x 0.95	[S]-[V]-[R]
565	0.21	0.99 x 0.89	[S]-[V]-[R]
566	0.32	0.99 x 1.00	[S]-[V]-R
567	0.29	0.96 x 0.92	?[S]?-[V]-[R]
568	0.20	1.02 x 0.91	[S]-[V]-[R]
569	0.28	0.99 x 0.81	[S]-[V]-[R]
570	0.28	1.00 x 0.96	[S]-[V]-R
571	0.36	0.94 x 0.93	[S]-[V]-R
572	0.32	0.97 x 0.97	[S]-[V]-[R]
573	0.20	0.88 x 0.91	[S]-[V]-[R]
574	0.31	0.96 x 0.96	[S]-V-[R]
575	0.22	0.99 x 0.99	?S?-[V]-[R]
576	0.29	0.95 x 0.98	?S?-V-[R]
577	0.28	0.88 x 1.03	[S]-[V]-[R]
578	0.22	0.95 x 1.01	[S]-[V]-R
579	0.31	1.07 x 1.11	S-V-[R]
580	0.34	0.92 x 1.02	S-[V]-R
581	0.14	0.95 x 0.96	[S]-[V]-[R]

582	0.38	0.93 x 0.94	[S]-[V]-R
583	0.33	0.90 x 0.94	[S]-[V]-R
584	0.24	0.99 x 0.90	[S]-[V]-[R]
585	0.33	1.00 x 1.04	[S]-[V]-R
586	0.17	1.05 x 0.98	[S]-V-[R]
587	0.20	0.96 x 1.01	[S]-[V]-[R]
588	0.24	0.98 x 0.99	[S]-V-[R]
589	0.33	0.94 x 0.94	[S]-V-[R]
590	0.20	0.85 x 0.89	[S]-[V]-R
591	0.19	1.07 x 0.96	[S]-[V]-R
592	0.27	0.91 x 0.86	[S]-[V]-[R]
593	0.27	0.97 x 0.88	[S]-V-[R]
594	0.34	0.98 x 0.97	[S]-[V]-R
595	0.28	0.80 x 0.98	[S]-[V]-R
596	0.17	0.95 x 0.85	S-[V]-[R]
597	0.32	1.03 x 0.98	[S]-V-R
598	0.27	1.06 x 1.03	[S]?-V-[R]
599	0.38	1.02 x 0.97	[S]-[V]-R
600	0.37	0.90 x 1.03	[S]-V-R
601	0.19	0.93 x 1.02	[S]-[V]-[R]
602	0.38	1.02 x 1.08	S?-V-[R]
603	0.22	0.97 x 0.82	[S]-[V]-[R]
604	0.24	0.92 x 0.95	[S]-[V]-[R]
605	0.29	0.89 x 0.96	[S]-[V]-[R]
606	0.37	0.95 x 0.99	[S]-[V]-R
607	0.26	0.91 x 1.05	[S]-[V]-R
608	0.23	1.02 x 0.92	[S]-V-[R]
609	0.16	0.83 x 0.92	[S]-[V]-R
610	0.24	0.91 x 1.05	[S]-V-R
611	0.25	0.98 x 1.07	[S]-[V]-R
612	0.19	1.04 x 1.02	?S?-[V]-R
613	0.31	0.97 x 1.05	[S]-V-[R]
614	0.25	0.96 x 1.05	?[S]-V-[R]
615	0.25	1.06 x 1.15	[S]-[V]-[R]
616	0.37	0.96 x 0.88	[S]-[V]-[R]
617	0.41	0.98 x 0.86	[S]?-[V]-[R]
618	0.26	1.11 x 1.13	[S]-V-R
619	0.17	0.97 x 0.95	[S]-V-[R]
620	0.25	0.93 x 0.91	[S]-[V]-[R]
621	0.24	0.93 x 0.93	[S]-[V]-R
622	0.29	0.87 x 1.01	[S]-V-[R]
623	0.28	1.00 x 1.04	?S?-V-R
624	0.34	0.79 x 1.05	[S]-[V]-[R]
625	0.39	0.97 x 0.99	[S]-[V]-[R]
626	0.29	0.90 x 0.94	S?-[V]-[R]
627	0.32	0.92 x 0.95	[S]?-[V]-[R]
628	0.19	0.86 x 1.01	[S]-[V]-[R]

629	0.38	0.95 x 0.87	[S]-[V]-[R]
630	0.30	1.12 x 1.16	[S]-V-[R]
631	0.31	1.06 x 1.05	[S]-[V]-R
632	0.26	0.99 x 0.97	[S]-[V]-[R]
633	0.24	0.96 x 0.90	[S]-[V]-[R]
634	0.15	0.94 x 0.95	[S]-V-[R]
635	0.26	0.97 x 0.99	[S]-[V]-[R]
636	0.23	1.10 x 0.93	[S]-V-[R]
637	0.30	1.10 x 1.08	[S]-[V]-[R]
638	0.35	0.97 x 0.94	[S]-V-[R]
639	0.41	0.97 x 0.96	?S?-V-[R]
640	0.27	0.95 x 0.95	S-[V]-R
641	0.35	0.93 x 0.97	[S]-V-R
642	0.32	1.02 x 1.12	[S]-[V]-[R]
643	0.35	1.03 x 1.10	[S]-[V]-R
644	0.28	0.99 x 1.02	S-V-[R]
645	0.25	0.98 x 0.93	S?-[V]-R
646	0.28	1.02 x 0.95	[S]-[V]-[R]
647	0.28	0.97 x 1.02	?[S]-[V]-[R]
648	0.27	1.01 x 0.90	[S]-V-[R]
649	0.34	0.96 x 0.93	S-V-[R]
650	0.24	1.06 x 1.01	[S]-[V]-[R]
651	0.36	0.92 x 0.98	[S]-[V]-[R]
652	0.24	1.03 x 0.94	[S]-[V]-R
653	0.30	1.03 x 0.94	[S]-V-R
654	0.30	0.92 x 0.92	?[S]?-[V]-[R]
655	0.35	0.91 x 1.06	[S]-V-[R]
656	0.37	0.91 x 0.99	[S]-V-R
657	0.24	0.99 x 0.83	[S]-[V]-[R]
658	0.36	0.99 x 0.92	[S]-[V]-[R]
659	0.23	0.95 x 0.84	[S]-[V]-R
660	0.33	1.02 x 1.02	S-V-R
661	0.37	1.04 x 1.00	[S]-[V]-R
662	0.38	0.95 x 0.96	[S]-[V]-[R]
663	0.23	0.92 x 0.99	[S]-[V]-[R]
664	0.23	1.08 x 1.07	[S]-[V]-[R]
665	0.25	1.03 x 1.07	[S]-[V]-R
666	0.30	0.96 x 0.88	S-V-[R]
667	0.34	1.05 x 1.05	[S]-[V]-R
668	0.31	0.99 x 1.01	?S?-V-R
669	0.28	0.95 x 0.97	[S]-[V]-[R]
670	0.31	1.02 x 1.01	S-V-[R]
671	0.39	0.99 x 1.02	?S?-V-R
672	0.29	0.92 x 0.95	?[S]?-[V]-[R]
673	0.32	0.87 x 0.93	[S]-[V]-[R]
674	0.28	0.86 x 0.78	[S]-[V]-[R]
675	0.34	1.50 x 0.98	S?-[V]-R

676	0.25	0.94 x 0.98	[S]-[V]-R
677	0.32	0.95 x 0.92	[S]-[V]-R
678	0.19	1.03 x 1.01	[S]-[V]-[R]
679	0.29	0.99 x 0.98	[S]-V-[R]
680	0.23	0.94 x 0.88	[S]-[V]-[R]
681	0.36	1.00 x 0.99	[S]?-V-[R]
682	0.34	0.76 x 0.94	[S]-[V]-[R]
683	0.38	0.99 x 0.84	[S]?-[V]-[R]
684	0.25	0.91 x 1.06	[S]?-V-[R]
685	0.26	0.99 x 0.96	[S]-V-[R]
686	0.20	0.93 x 0.84	[S]-[V]-[R]
687	0.30	1.01 x 0.98	[S]-[V]-[R]
688	0.21	0.98 x 1.05	[S]-V-[R]
689	0.35	0.93 x 0.94	[S]-V-R
690	0.29	1.03 x 0.98	[S]-V-[R]
691	0.39	0.80 x 0.93	[S]-[V]-R
692	0.29	0.88 x 0.93	[S]-[V]-R
693	0.21	0.95 x 0.98	[S]-V-[R]
694	0.28	1.02 x 1.01	S?-[V]-[R]
695	0.31	0.94 x 1.00	[S]-[V]-[R]
696	0.24	0.99 x 1.00	[S]-V-[R]
697	0.28	0.85 x 1.07	[S]-[V]-R
698	0.26	0.94 x 0.95	[S]?-[V]-R
699	0.30	0.97 x 0.99	[S]-V-[R]
700	0.28	0.94 x 0.91	[S]-[V]-R
701	0.25	0.84 x 0.97	[S]-[V]-R
702	0.27	0.92 x 0.94	[S]-[V]-[R]
703	0.25	0.90 x 0.99	[S]-[V]-[R]
704	0.29	0.89 x 0.94	[S]-[V]-[R]
705	0.31	0.97 x 1.00	[S]-V-[R]
706	0.28	0.85 x 0.97	[S]-V-[R]
707	0.25	0.98 x 0.97	[S]-[V]-[R]
708	0.42	0.97 x 0.93	[S]-[V]-[R]
709	0.29	0.98 x 0.99	[S]-V-[R]
710	0.21	0.98 x 0.97	S-[V]-[R]
711	0.17	0.85 x 0.76	[S]-[V]-[R]
712	0.34	0.95 x 1.00	[S]-V-[R]
713	0.29	1.02 x 0.96	[S]-[V]-[R]
714	0.32	0.83 x 0.99	[S]-V-[R]
715	0.24	0.84 x 0.86	[S]-V-[R]
716	0.29	0.95 x 0.95	[S]-[V]-R
717	0.40	1.05 x 0.97	S?-V-[R]
718	0.31	1.02 x 1.02	[S]-[V]-[R]
719	0.20	0.93 x 0.90	[S]-[V]-[R]
720	0.33	1.02 x 1.02	[S]-V-R
721	0.40	1.04 x 0.88	S-[V]-[R]
722	0.29	0.91 x 0.98	[S]-[V]-[R]

723	0.34	0.93 x 0.96	[S]-V-[R]
724	0.28	0.83 x 0.93	[S]-[V]-[R]
725	0.29	0.96 x 0.89	[S]-[V]-[R]
726	0.23	0.89 x 0.86	[S]-[V]-[R]
727	0.27	0.91 x 0.88	[S]-[V]-[R]
728	0.41	0.88 x 0.93	[S]-[V]-[R]
729	0.26	0.86 x 0.92	[S]-[V]-[R]
730	0.32	0.96 x 1.00	?[S]-V-R
731	0.25	0.95 x 0.82	[S]-[V]-[R]
732	0.30	0.93 x 0.87	[S]-[V]-[R]
733	0.34	0.88 x 0.96	[S]-[V]-[R]
734	0.19	0.99 x 1.09	[S]-[V]-[R]
735	0.36	1.19 x 1.14	?[S]-V-R
736	0.25	1.00 x 1.10	[S]-[V]-R
737	0.24	1.06 x 1.08	[S]-V-R
738	0.34	0.96 x 0.87	[S]-V-[R]
739	0.26	0.96 x 0.89	[S]-V-[R]
740	0.41	1.02 x 1.05	[S]-V-R
741	0.25	0.95 x 1.00	[S]-V-R
742	0.34	1.00 x 0.99	[S]?-[V]-[R]
743	0.28	0.90 x 0.89	[S]-[V]-[R]
744	0.31	0.88 x 0.94	[S]-[V]-R
745	0.39	0.89 x 0.96	[S]-V-[R]
746	0.38	0.96 x 0.91	[S]-[V]-[R]
747	0.28	0.93 x 9.96	[S]-V-[R]
748	0.22	0.86 x 1.00	[S]-[V]-[R]
749	0.27	0.96 x 0.97	[S]-V-R
750	0.21	0.94 x 0.79	[S]-[V]-[R]
751	0..31	0.81 x 0.94	S?-[V]-[R]
752	0.22	1.02 x 1.05	[S]-[V]-R
753	0.37	1.02 x 0.97	[S]-V-[R]
754	0.36	0.97 x 0.92	[S]-[V]-R
755	0.31	0.99 x 1.07	[S]-[V]-[R]
756	0.35	0.90 x 1.04	[S]-[V]-[R]
757	0.36	0.92 x 0.96	[S]-[V]-R
758	0.28	0.96 x 0.96	[S]-V-[R]
759	0.25	1.01 x 1.05	[S]-[V]-R
760	0.30	0.92 x 1.04	[S]?-[V]-[R]
761	0.29	0.86 x 0.89	[S]-V-[R]
762	0.18	0.93 x 1.02	[S]-V-[R]
763	0.29	0.94 x 0.94	[S]-V-[R]
764	0.28	1.04 x 0.99	[S]-[V]-[R]
765	0.33	1.03 x 1.08	[S]-[V]-R
766	0.26	1.00 x 0.96	[S]-V-[R]
767	0.16	0.89 x 0.95	[S]-V-[R]
768	0.24	0.89 x 0.96	[S]-V-[R]
769	0.33	0.92 x 0.94	?S?-[V]-R

770	0.24	0.83 x 0.97	[S]-[V]-R
771	0.35	0.96 x 1.05	[S]-V-R
772	0.33	0.95 x 0.94	[S]-V-[R]
773	0.31	1.05 x 0.90	[S]-V-[R]
774	0.17	0.96 x 0.93	[S]?-[V]-[R]
775	0.25	0.76 x 1.02	[S]-V-[R]
776	0.43	0.95 x 0.96	[S]-[V]-R
777	0.37	1.00 x 1.02	[S]-V-[R]
778	0.28	0.99 x 0.97	[S]-V-[R]
779	0.25	1.18 x 1.09	[S]-[V]-[R]
780	0.28	1.00 x 0.95	[S]-V-[R]
781	0.29	1.04 x 1.05	[S]-[V]-R
782	0.35	1.02 x 1.01	?[S]?-[V]-[R]
783	0.36	0.96 x 0.99	[S]-[V]-[R]
784	0.34	0.98 x 0.97	?[S]?-V-[R]
785	0.18	0.97 x 0.07	?[S]?-[V]-[R]
786	0.41	0.99 x 1.00	[S]-V-R
787	0.29	1.08 x 1.14	[S]-V-R
788	0.26	0.96 x 0.88	[S]-[V]-[R]
789	0.23	0.93 x 0.87	[S]-[V]-[R]
790	0.42	1.05 x 1.01	[S]-[V]-[R]
791	0.22	0.99 x 0.94	[S]-[V]-[R]
792	0.36	1.13 x 0.90	?[S]-[V]-R
793	0.36	0.93 x 0.94	[S]-[V]-R
794	0.29	1.01 x 1.01	[S]-[V]-R
795	0.29	0.97 x 0.96	S-[V]-R
796	0.31	0.99 x 0.94	[S]-V-[R]
797	0.17	0.97 x 0.97	[S]-[V]-R
798	0.21	0.89 x 0.99	[S]-[V]-[R]
799	0.20	1.02 x 0.97	[S]-[V]-[R]
800	0.25	0.88 x 0.96	[S]-V-[R]
801	0.23	1.05 x 1.10	[S]-V-R
802	0.30	1.01 x 1.00	[S]-[V]-[R]
803	0.36	0.97 x 1.05	[S]-V-R
804	0.28	1.00 x 0.88	[S]-[V]-[R]
805	0.29	0.96 x 0.93	[S]-V-[R]
806	0.33	0.92 x 0.86	[S]-V-[R]
807	0.35	0.91 x 1.00	[S]-V-[R]
808	0.33	0.91 x 1.01	[S]-[V]-R
809	0.20	0.90 x 1.02	[S]-[V]-R
810	0.37	1.01 x 1.02	[S]-[V]-[R]
811	0.24	1.00 x 0.97	?[S]?-[V]-[R]
812	0.21	0.94 x 0.99	[S]-V-[R]
813	0.24	0.92 x 0.90	[S]-[V]-[R]
814	0.27	0.99 x 1.06	?[S]?-[V]-R
815	0.33	0.87 x 1.00	[S]?-V-[R]
816	0.18	0.90 x 0.90	[S]-[V]-[R]



817	0.33	0.96 x 0.97	[S]-V-[R]
818	0.34	0.94 x 0.87	[S]-[V]-[R]
819	0.28	1.05 x 0.95	[S]-[V]-R
820	0.25	0.86 x 1.01	[S]-V-[R]
821	0.38	1.02 x 1.02	[S]-V-[R]
822	0.27	0.97 x 0.96	[S]-V-[R]
823	0.33	1.02 x 1.05	[S]-[V]-[R]
824	0.29	0.93 x 0.90	[S]-[V]-[R]
825	0.26	0.94 x 0.97	[S]-V-[R]
826	0.29	1.07 x 0.98	?[S]?-V-[R]
827	0.29	1.05 x 1.05	[S]-V-[R]
828	0.27	1.02 x 1.07	[S]-V-R
829	0.36	0.93 x 1.01	[S]-[V]-R
830	0.30	0.98 x 1.06	[S]-[V]-R
831	0.48	0.97 x 1.08	[S]-[V]-[R]
832	0.41	1.03 x 1.04	[S]-[V]-[R]
833	0.29	0.99 x 0.95	[S]-[V]-R
834	0.29	0.96 x 0.96	[S]-V-[R]
835	0.20	0.96 x 1.05	[S]-[V]-R
836	0.26	0.97 x 0.95	[S]-V-[R]
837	0.25	0.86 x 0.94	[S]-[V]-R
838	0.31	1.00 x 1.00	?S?-V-R
839	0.32	0.90 x 0.94	S-[V]-[R]
840	0.29	0.94 x 0.95	[S]-V-[R]
841	0.31	1.02 x 0.95	[S]-[V]-[R]
842	0.33	0.96 x 1.05	[S]-V-R
843	0.24	0.92 x 1.01	[S]-V-[R]
844	0.29	0.99 x 1.03	[S]-[V]-R
845	0.30	1.00 x 0.91	[S]-V-[R]
846	0.35	1.00 x 0.99	[S]-V-[R]
847	0.28	0.94 x 0.98	[S]-V-[R]
848	0.34	0.89 x 1.01	[S]-V-[R]
849	0.29	0.99 x 1.09	[S]-V-[R]
850	0.31	1.01 x 0.94	[S]-[V]-R
851	0.16	0.86 x 0.88	[S]-[V]-[R]
852	0.38	0.98 x 0.99	[S]-[V]-[R]
853	0.25	0.92 x 1.00	[S]-V-[R]
854	0.35	0.94 x 0.97	[S]-[V]-[R]
855	0.27	0.99 x 1.01	[S]-[V]-[R]
856	0.25	1.04 x 0.98	[S]-[V]-[R]
857	0.16	1.03 x 0.92	[S]-[V]-[R]
858	0.24	0.97 x 1.03	?[S]?-[V]-[R]
859	0.14	0.89 x 0.86	[S]-[V]-R
860	0.30	0.83 x 0.98	[S]-V-[R]
861	0.30	0.98 x 1.00	[S]-V-[R]
862	0.42	1.07 x 1.06	[S]-[V]-R
863	0.22	0.85 x 0.92	[S]-[V]-R

864	0.48	0.97 x 0.97	[S]-[V]-[R]
865	0.20	1.10 x 1.06	[S]-[V]-[R]
866	0.23	0.92 x 0.97	[S]-[V]-[R]
867	0.29	0.99 x 0.99	[S]-V-[R]
868	0.35	0.94 x 0.95	[S]-V-R
869	0.29	1.06 x 0.96	[S]-[V]-R
870	0.22	0.96 x 0.96	[S]-V-[R]
871	0.30	0.99 x 0.92	S-[V]-R
872	0.30	1.06 x 1.13	[S]-V-[R]
873	0.58	0.95 x 0.92	[S]-V-[R]
874	0.42	0.99 x 0.99	?S-[V]-R
875	0.26	0.91 x 0.96	[S]-[V]-[R]
876	0.31	1.00 x 1.04	[S]-V-[R]
877	0.22	0.94 x 1.01	[S]-V-[R]
878	0.31	0.94 x 0.89	[S]-[V]-[R]
879	0.30	0.95 x 0.98	[S]-[V]-[R]
880	0.19	0.94 x 0.98	[S]-V-R
881	0.28	0.90 x 1.02	[S]-[V]-[R]
882	0.28	0.93 x 0.96	[S]-[V]-R
883	0.28	0.98 x 0.98	[S]-[V]-R
884	0.27	1.08 x 1.10	[S]-V-R
885	0.35	1.02 x 0.99	[S]-[V]-R
886	0.23	1.01 x 0.85	[S]-V-[R]
887	0.33	0.89 x 1.00	[S]-V-[R]
888	0.33	1.01 x 0.91	[S]-[V]-[R]
889	0.31	1.05 x 1.10	[S]-[V]-R
890	0.23	0.84 x 0.81	[S]-[V]-[R]
891	0.38	0.94 x 0.99	[S]-[V]-[R]
892	0.20	0.99 x 1.00	[S]-[V]-[R]
893	0.28	1.05 x 1.01	?[S]?-V-R
894	0.32	0.98 x 1.01	[S]-V-[R]
895	0.24	0.97 x 1.03	[S]-V-[R]
896	0.32	1.06 x 1.00	[S]-[V]-R
897	0.34	0.97 x 0.92	?[S]?-V-[R]
898	0.18	0.91 x 0.96	?[S]?-[V]-[R]
899	0.30	0.90 x 1.08	S-V-[R]
900	9.29	1.06 x 1.06	[S]-[V]-R
901	0.28	0.99 x 0.91	[S]-[V]-[R]
902	0.31	0.99 x 0.92	[S]-V-[R]
903	0.25	1.01 x 0.97	[S]-[V]-[R]
904	0.39	1.02 x 1.02	[S]-[V]-R
905	0.27	0.96 x 0.98	[S]-V-R
906	0.32	0.98 x 0.97	[S]-[V]-[R]
907	0.27	1.03 x 0.97	[S]-V-[R]
908	0.26	1.00 x 0.84	?[S]?-[V]-[R]
909	0.30	0.90 x 1.02	[S]-[V]-[R]
910	0.28	1.02 x 1.01	[S]-V-R

911	0.26	0.84 x 0.94	[S]-[V]-R
912	0.52	0.99 x 0.98	[S]-V-[R]
913	0.23	1.04 x 1.00	[S]-[V]-[R]
914	0.14	0.99 x 1.01	[S]-[V]-R
915	0.20	0.98 x 0.94	[S]-V-[R]
916	0.24	0.91 x 0.96	[S]-[V]-[R]
917	0.26	0.93 x 1.02	[S]-V-[R]
918	0.35	0.87 x 0.91	[S]-V-[R]
919	0.36	0.98 x 0.99	[S]-V-[R]
920	0.27	1.00 x 1.01	[S]-[V]-[R]
921	0.23	1.00 x 0.81	[S]-[V]-[R]
922	0.29	1.04 x 1.05	[S]-V-[R]
923	0.35	0.95 x 0.94	[S]-V-R
924	0.29	0.98 x 0.86	[S]-[V]-[R]
925	0.31	1.03 x 0.97	[S]-[V]-R
926	0.29	0.94 x 0.99	[S]-V-R
927	9.32	0.90 x 0.95	?[S]?-[V]-[R]
928	0.30	0.90 x 1.01	?[S]?-V-[R]
929	0.38	0.92 x 0.96	[S]-[V]-[R]
930	0.26	1.00 x 0.99	?[S]?-[V]-R
931	0.29	0.84 x 0.97	[S]-[V]-R
932	0.27	0.99 x 0.97	[S]-[V]-R
933	0.20	1.00 x 1.12	[S]-V-[R]
934	0.28	0.98 x 0.89	[S]-[V]-[R]
935	0.38	0.99 x 1.02	[S]-[V]-R
936	0.32	0.93 x 0.89	[S]-[V]-[R]
937	0.38	0.96 x 0.96	?[S]-V-[R]
938	0.33	0.95 x 0.97	[S]-[V]-[R]
939	0.29	0.92 x 0.99	[S]-[V]-[R]
940	0.32	1.02 x 1.00	[S]-V-[R]
941	0.22	0.92 x 0.89	[S]-[V]-R
942	0.26	1.04 x 1.02	[S]-[V]-R
943	0.21	0.91 x 0.94	[S]-V-[R]
944	0.28	0.88 x 0.99	[S]-V-R
945	0.34	1.09 x 1.09	[S]-V-[R]
946	0.32	0.91 x 1.01	[S]-V-[R]
947	0.26	1.00 x 0.84	[S]-[V]-[R]
948	0.26	1.01 x 0.97	[S]-V-[R]
949	0.28	0.91 x 0.97	[S]-V-R
950	0.44	0.92 x 0.95	[S]-V-[R]
951	0.34	0.92 x 0.96	[S]-V-[R]
952	0.27	0.98 x 1.00	S-[V]-[R]
953	0.30	0.93 x 0.95	[S]?-[V]-[R]
954	0.21	1.08 x 1.06	[S]-V-[R]
955	0.24	0.98 x 0.96	[S]-[V]-[R]
956	0.37	0.96 x 0.87	[S]-[V]-R
957	0.36	1.01 x 0.93	[S]-[V]-R

958	0.29	0.98 x 0.97	[S]-V-R
959	0.29	1.00 x 1.01	[S]-[V]-[R]
960	0.21	0.92 x 0.95	[S]-[V]-R
961	0.32	1.10 x 1.06	[S]-V-R
962	0.22	0.91 x 0.97	[S]-[V]-[R]
963	0.30	0.96 x 0.94	[S]-[V]-R
964	0.28	0.96 x 0.89	?[S]?-V-[R]
965	0.39	1.00 x 0.99	[S]-V-[R]
966	0.32	0.96 x 1.00	[S]-[V]-[R]
967	0.29	0.97 x 1.07	[S]-V-[R]
968	0.33	1.06 x 1.02	?[S]?-[V]-[R]
969	0.33	0.99 x 0.98	?[S]?-[V]-[R]
970	0.22	1.00 x 1.04	[S]-V-[R]
971	0.24	1.07 x 0.98	[S]-[V]-R
972	0.20	0.85 x 1.00	[S]-[V]-R
973	0.34	1.01 x 0.98	[S]-[V]-[R]
974	0.23	1.04 x 1.00	[S]-[V]-[R]
975	0.33	0.93 x 0.92	[S]-[V]-R
976	0.39	1.01 x 1.05	[S]-[V]-[R]
977	0.24	0.99 x 0.86	[S]-[V]-[R]
978	0.27	0.87 x 1.08	?[S]-[V]-[R]
979	0.52	0.96 x 0.99	[S]-[V]-R
980	0.24	0.84 x 0.88	[S]-[V]-[R]
981	0.39	0.96 x 0.97	[S]-[V]-[R]
982	0.35	1.04 x 0.97	[S]-[V]-R
983	0.38	0.93 x 0.99	[S]-[V]-[R]
984	0.31	0.97 x 0.96	[S]-[V]-[R]
985	0.28	0.94 x 0.89	[S]-[V]-R
986	0.26	0.86 x 0.91	[S]-V-[R]
987	0.28	1.02 x 0.95	[S]-[V]-[R]
988	0.39	0.90 x 0.93	[S]-V-[R]
989	0.29	0.93 x 0.89	[S]-[V]-[R]
990	0.20	0.99 x 0.93	[S]-[V]-[R]
991	0.29	0.98 x 1.05	[S]-[V]-[R]
992	0.21	0.83 x 1.05	?[S]?-V-[R]
993	0.29	0.94 x 0.98	?[S]?-[V]-[R]
994	0.48	0.87 x 0.99	[S]-[V]-[R]
995	0.25	0.94 x 0.97	[S]-[V]-[R]
996	0.20	0.80 x 0.83	S-[V]-[R]
997	0.24	0.90 x 0.93	[S]-[V]-[R]
998	0.23	0.97 x 0.98	[S]-[V]-R
999	0.31	0.95 x 0.90	[S]-[V]-[R]
1000	0.29	0.94 x 1.02	[S]-[V]-R
1001	0.34	1.06 x 1.02	[S]-[V]-[R]
1002	0.28	0.80 x 0.84	[S]-[V]-[R]
1003	0.28	0.98 x 0.91	[S]-V-[R]
1004	0.28	0.97 x 0.97	[S]-[V]-R

1005	0.42	0.95 x 0.95	[S]-V-[R]
1006	0.28	1.04 x 1.01	[S]-[V]-[R]
1007	0.37	0.91 x 0.96	[S]-[V]-R
1008	0.33	0.96 x 0.99	[S]-V-[R]
1009	0.23	0.91 x 0.98	[S]-[V]-[R]
1010	0.30	0.88 x 0.89	[S]-V-[R]
1011	0.24	0.94 x 0.99	[S]-V-[R]
1012	0.33	0.92 x 0.95	[S]-[V]-R
1013	0.17	0.94 x 0.86	[S]-[V]-[R]
1014	0.50	0.90 x 0.98	[S]-[V]-R
1015	0.29	0.98 x 0.94	[S]-[V]-[R]
1016	0.27	0.95 x 1.05	[S]-[V]-[R]
1017	0.23	0.94 x 0.98	[S]-V-[R]
1018	0.23	0.89 x 0.97	[S]-V-[R]

*Parvi* minted between 1387-1427. Unknown mints. Illegible marks.

1019	0.25	1.02 x 0.97	[S]-V-[R]
1020	0.20	1.11 x 1.10	-
1021	0.36	0.96 x 0.94	?[S]?-[V]-[R]
1022	0.34	0.95 x 0.99	[S]-[V]-[R]
1023	0.27	1.11 x 0.97	[S]-[V]-[R]
1024	0.25	1.10 x 1.03	[S]-[V]-[R]
1025	0.30	0.91 x 1.01	-
1026	0.30	0.82 x 1.02	[S]-[V]-[R]
1027	0.26	1.05 x 1.06	[S]-[V]-[R]
1028	0.23	1.03 x 1.09	[S]-[V]-[R]
1029	0.41	0.96 x 0.92	-
1030	0.25	0.99 x 1.02	[S]-[V]-R
1031	0.11	0.84 x 0.90	-
1032	0.33	1.08 x 1.01	S?-[V]-[R]
1033	0.30	0.99 x 0.98	-
1034	0.35	0.99 x 1.09	-
1035	0.26	0.97 x 0.96	-
1036	0.42	1.02 x 0.97	[S]-[V]-[R]
1037	0.28	1.06 x 1.12	S?-[V]-[R]
1038	0.27	1.05 x 1.01	[S]-[V]-[R]
1039	0.26	0.95 x 1.05	[S]-[V]-[R]
1040	0.16	1.06 x 1.09	S-[V]-[R]
1041	0.30	1.03 x 1.02	[S]-V-[R]
1042	0.25	1.03 x 1.03	[S]-[V]-[R]
1043	0.21	0.95 x 0.94	[S]-[V]-R
1044	0.35	1.02 x 0.94	S-[V]-[R]
1045	0.37	1.01 x 1.01	S-V-[R]
1046	0.36	0.80 x 0.94	[S]-[V]-[R]
1047	0.29	0.94 x 0.04	S?-[V]-R
1048	0.26	0.97 x 0.81	[S]-[V]-[R]
1049	0.26	1.01 x 1.00	[S]-[V]-[R]

1050	0.35	1.02 x 1.02	[S]-V-[R]
1051	0.33	0.87 x 1.02	[S]-V-[R]
1052	0.32	1.00 x 1.02	[S]-[V]-[R]
1053	0.24	0.99 x 1.02	[S]-[V]-[R]
1054	0.24	0.93 x 0.91	[S]-[V]-[R]
1055	0.24	0.97 x 1.04	-
1056	0.22	1.04 x 0.90	[S]-[V]-[R]
1057	0.11	1.03 x 0.95	[S]-[V]-[R]
1058	0.14	0.85 x 0.76	-
1059	0.18	1.23 x 1.16	?S?-V-R
1060	0.19	1.18 x 1.21	S?-V-R
1061	0.29	1.19 x 1.19	[S]-V-R
1062	0.38	1.06 x 1.13	S-V-[R]
1063	0.20	1.15 x 1.15	[S]-[V]-[R]
1064	0.29	1.05 x 0.99	S-V-[R]
1065	0.21	1.12 x 1.13	S-V-[R]
1066	0.23	1.05 x 0.98	S-V-[R]
1067	0.34	0.94 x 0.95	[S]-[V]-[R]
1068	0.22	1.08 x 1.10	[S]-V-[R]
1069	0.28	1.06 x 0.99	[S]-[V]-[R]
1070	0.25	1.03 x 0.96	[S]-[V]-[R]
1071	0.29	1.07 x 1.09	[S]-V-[R]
1072	0.30	0.99 x 1.02	[S]-[V]-[R]
1073	0.32	0.98 x 1.06	[S]-[V]-R
1074	0.23	0.95 x 0.91	[S]-[V]-[R]
1075	0.32	1.02 x 0.87	[S]-V-[R]
1076	0.18	0.96 x 1.09	[S]-[V]-R
1077	0.21	0.95 x 1.05	[S]-[V]-[R]
1078	0.19	0.83 x 0.89	[S]-[V]-[R]
1079	0.30	1.07 x 0.98	[S]-[V]-[R]
1080	0.25	0.99 x 1.00	[S]-[V]-[R]
1081	0.30	1.10 x 0.98	[S]-[V]-[R]
1082	0.30	0.86 x 1.04	[S]-[V]-[R]
1083	0.43	0.99 x 0.97	[S]-[V]-[R]
1084	0.27	1.03 x 0.99	[S]-[V]-R
1085	0.26	1.02 x 1.10	[S]-[V]-[R]
1086	0.33	1.06 x 1.04	[S]-[V]-[R]
1087	0.33	0.93 x 1.06	[S]-[V]-[R]
1088	0.22	0.96 x 0.83	[S]-[V]-[R]
1089	0.29	1.29 x 1.19	[S]-[V]-R
1090	0.24	1.08 x 1.07	[S]-V-R
1091	0.21	1.02 x 1.00	[S]-[V]-[R]
1092	0.20	0.98 x 1.05	[S]-[V]-[R]
1093	0.20	1.00 x 1.02	[S]-[V]-[R]
1094	0.17	0.95 x 0.86	[S]-[V]-[R]
1095	0.23	0.99 x 0.97	[S]-[V]-[R]
1096	0.29	0.94 x 0.88	-

1097	0.29	0.87 x 1.03	[S]-[V]-[R]
1098	0.31	0.96 x 0.99	[S]-[V]-[R]
1099	0.20	0.97 x 0.94	[S]-[V]-[R]
1100	0.19	1.03 x 0.98	[S]-[V]-[R]

*Pari* minted between 1387-1427. Unknown mints. Illegible marks, mis-struck.

1101	0.37	1.10 x 1.12	S-V-R
1102	0.40	1.15 x 1.16	S-[V]-R
1103	0.37	1.24 x 1.16	[S]-V-R
1104	0.30	1.16 x 1.19	S-V-R

*Pari* minted between 1387-1427. Unknown mint. On the reverse, instead of a crown **♞**. Huszár, p. 94, no. 581; CNH, p. 104, no. 125B; Unger I, p. 143, no. 453.

### *Quartings*

1105	0.63	1.36 x 1.38	<b>℞ ℞</b>
1106	0.47	1.44 x 1.35	<b>℞ ℞</b>
1107	0.52	1.39 x 1.36	<b>℞ ℞</b>
1108	0.53	1.32 x 1.32	<b>℞ ℞</b>
1109	0.34	1.35 x 1.25	<b>℞ ℞</b>
1110	0.36	1.36 x 1.32	<b>℞ ℞</b>
1111	0.30	1.33 x 1.18	<b>℞ ℞</b>
1112	0.55	1.36 x 1.32	<b>℞ ℞</b>
1113	0.53	1.35 x 1.42	<b>℞ ℞</b>
1114	0.45	1.30 x 1.31	<b>℞ ℞</b>
1115	0.42	1.35 x 1.37	<b>℞ ℞</b>
1116	0.41	1.27 x 1.32	<b>℞ ℞</b>
1117	0.58	1.35 x 1.35	<b>℞ ℞</b>
1118	0.60	1.34 x 1.26	<b>℞ ℞</b>
1119	0.52	1.40 x 1.39	<b>℞ ℞</b>
1120	0.47	1.40 x 1.38	<b>℞ ℞</b>

*Quartings* minted in Baia Mare between 1430-1437.

Obv. Double cross, marks between the arms of the cross

Rev. Crown.

Huszár, p. 95, no. 586; CNH, p. 105, no. 129; Unger I, p. 144, no. 456; Pohl, p. 124-45.

1121	0.46	1.38 x 1.35	<b>℞ ℞</b>
1122	0.33	1.33 x 1.35	<b>℞ ℞</b>
1123	0.30	1.43 x 1.29	<b>℞ ℞</b> (mis-struck)
1124	0.70	1.27 x 1.36	<b>℞ ℞</b>
1125	0.46	1.32 x 1.31	<b>℞ ℞</b>
1126	0.50	1.33 x 1.33	<b>℞ ℞</b>
1127	0.52	1.30 x 1.33	<b>℞ ℞</b>
1128	0.53	1.30 x 1.33	<b>℞ ℞</b>
1129	0.44	1.39 x 1.46	<b>℞ ℞</b>
1130	0.51	1.28 x 1.28	<b>℞ ℞</b>

1131	0.56	1.33 x 1.22	<b>n n</b>
1132	0.31	1.27 x 1.37	<b>n n</b>
1133	0.35	1.30 x 1.31	<b>n n</b>
1134	0.38	1.31 x 1.37	<b>n n</b>
1135	0.42	1.25 x 1.18	<b>n n</b>

*Quartings* minted in Baia Mare between 1430-1437. Collective issue. Pohl, 124-44.

1136	0.61	1.39 x 1.45	<b>n B</b>
1137	0.43	1.35 x 1.35	<b>n B</b>

*Quartings* minted in Baia Mare between 1430-1437. Pohl, 124-43.

1138	0.48	1.21 x 1.28	<b>nW</b>
------	------	-------------	-----------

*Quarting* minted in Baia Mare in the year 1433. Moneyer, Nikolaus Wasserpauch. Pohl, 124-46.

1139	0.52	1.33 x 1.39	<b>n ?</b>
1140	0.39	1.34 x 1.31	<b>n ?</b>
1141	0.52	1.37 x 1.41	<b>n ?</b>
1142	0.40	1.38 x 1.46	<b>n ?</b>
1143	0.74	1.30 x 1.30	<b>n ?</b>
1144	0.48	1.43 x 1.36	<b>n ?</b>
1145	0.33	1.33 x 1.32	<b>n ?</b>
1146	0.66	1.42 x 1.51	<b>n ?</b>
1147	0.41	1.29 x 1.42	<b>n ?</b>
1148	0.34	1.40 x 1.38	<b>n ?</b>
1149	0.48	1.36 x 1.28	<b>n ?</b>
1150	0.45	1.28 x 1.20	<b>n ?</b>

*Quartings* minted in Baia Mare between 1430-1437.

1151	0.56	1.27 x 1.27	<b>I I</b>
1152	0.36	1.35 x 1.35	<b>I I</b>
1153	0.30	1.37 x 1.29	<b>I I</b>
1154	0.53	1.33 x 1.30	<b>I I</b>
1155	0.48	1.28 x 1.36	<b>I I</b>
1156	0.59	1.31 x 1.30	<b>I I</b>
1157	0.49	1.15 x 1.23	<b>I I</b>
1158	0.61	1.34 x 1.33	<b>I I</b>
1159	0.33	1.33 x 1.26	<b>I I</b>
1160	0.40	1.24 x 1.26	<b>I I</b>
1161	0.50	1.22 x 1.22	<b>I I</b>
1162	0.40	1.30 x 1.30	<b>I I</b>
1163	0.31	1.27 x 1.29	<b>I I</b>



1164	0.43	1.32 x 1.31	I I
1165	0.34	1.34 x 1.23	I I
1166	0.45	1.19 x 1.18	I I
1167	0.28	1.36 x 1.34	I I
1168	0.34	1.30 x 1.35	I I
1169	0.31	1.39 x 1.24	I I (mis-struck)
1170	0.61	1.27 x 1.37	I I
1171	0.55	1.29 x 1.34	I I
1172	0.27	1.33 x 1.32	I I
1173	0.34	1.21 x 1.21	I I
1174	0.58	1.37 x 1.44	I I
1175	0.32	1.35 x 1.29	I I
1176	0.48	1.31 x 1.30	I I
1177	0.35	1.29 x 1.29	I I
1178	0.42	1.42 x 1.44	I I
1179	0.50	1.39 x 1.34	I I
1180	0.52	1.35 x 1.34	I I
1181	0.47	1.27 x 1.30	I I
1182	0.37	1.26 x 1.27	I I
1183	0.30	1.40 x 1.33	I I
1184	0.67	1.31 x 1.28	I I
1185	0.36	1.27 x 1.12	I I
1186	0.52	1.27 x 1.32	I I
1187	0.51	1.24 x 1.19	I I
1188	0.41	1.31 x 1.27	I I
1189	0.38	1.21 x 1.28	I I
1190	0.45	1.42 x 1.33	I I (mis-struck)
1191	0.53	1.30 x 1.38	I I
1192	0.50	1.39 x 1.34	I I
1193	0.44	1.33 x 1.30	I I
1194	0.36	1.38 x 1.44	I I
1195	0.54	1.29 x 1.36	I I
1196	0.42	1.25 x 1.31	I I
1197	0.57	1.33 x 1.28	I I
1198	0.35	1.27 x 1.39	I I
1199	0.22	1.32 x 1.33	I I

1200	0.33	1.14 x 1.27	† †
1201	0.33	1.34 x 1.31	† †
1202	0.27	1.24 x 1.34	† †
1203	0.59	1.31 x 1.26	† †
1204	0.21	1.22 x 1.27	† †
1205	0.46	1.33 x 1.32	† †
1206	0.37	1.25 x 1.34	† †
1207	0.22	1.31 x 1.23	† †
1208	0.45	1.39 x 1.28	† †
1209	0.58	1.31 x 1.31	† †
1210	0.21	1.25 x 1.12	† †
1211	0.38	1.35 x 1.30	† †
1212	0.23	1.17 x 1.18	† †
1213	0.52	1.42 x 1.35	† †
1214	0.70	1.38 x 1.34	† †
1215	0.50	1.26 x 1.19	† †
1216	0.35	1.24 x 1.22	† †
1217	0.40	1.25 x 1.24	† †
1218	0.38	1.33 x 1.43	† †
1219	0.52	1.33 x 1.27	† †
1220	0.38	1.29 x 1.20	† †
1221	0.28	1.30 x 1.34	† †
1222	0.35	1.51 x 1.45	† †
1223	0.58	1.20 x 1.22	† †
1224	0.43	1.36 x 1.27	† †
1225	0.30	1.33 x 1.33	† †
1226	0.50	1.33 x 1.36	† †
1227	0.25	1.26 x 1.29	† †
1228	0.51	1.33 x 1.44	† †
1229	0.35	1.19 x 1.19	† †
1230	0.34	1.41 x 1.33	† †
1231	0.33	1.27 x 1.42	† †
1232	0.45	1.25 x 1.14	† †

*Quartings* minted in Bratislava between 1430-1437. Pohl, 124-33.

1233	0.34	1.17 x 1.17	♣ ♠
1234	0.30	1.39 x 1.36	♣ ♠

1235	0.20	1.30 x 1.29	<b>Б н</b>
1236	0.36	1.24 x 1.38	<b>Б н</b>
1237	0.47	1.37 x 1.36	<b>Б н</b>
1238	0.48	1.22 x 1.24	<b>Б н</b>
1239	0.43	1.33 x 1.30	<b>Б н</b> (mis-struck)
1240	0.25	1.38 x 1.33	<b>Б н</b> (mis-struck)
1241	0.37	1.37 x 1.35	<b>Б н</b>
1242	0.36	1.36 x 1.26	<b>Б н</b>
1243	0.42	1.28 x 1.28	<b>Б н</b>
1244	0.57	1.24 x 1.43	<b>Б н</b>
1245	0.42	1.29 x 1.32	<b>Б н</b>
1246	0.56	1.29 x 1.33	<b>Б н</b>
1247	0.31	1.33 x 1.26	<b>Б н</b>
1248	0.67	1.19 x 1.24	<b>Б н</b>
1249	0.40	1.33 x 1.33	<b>Б н</b>
1250	0.36	1.35 x 1.47	<b>Б н</b>
1251	0.45	1.26 x 1.29	<b>Б н</b>

*Quartings* minted in Buda between 1430-1437. Moneyer, Michael Nadler. Pohl, 124-18.

1252	0.40	1.29 x 1.31	<b>Б Ꝑ</b>
1253	0.42	1.28 x 1.30	<b>Б Ꝑ</b> (mis-struck)

*Quartings* minted in Buda between 1430-1437. Moneyer, Angelo Walich. Pohl, 124-13.

1254	0.39	1.29 x 1.34	<b>Б α</b>
------	------	-------------	------------

*Quarting* minted in Buda between 1430-1437. Town issue. Pohl, 124-15.

1255	0.47	1.28 x 1.25	<b>Б ꝑ</b>
------	------	-------------	------------

*Quarting* minted in Buda between 1430-1437. Collective issue. Pohl, 124-14.

1256	0.50	1.35 x 1.20	<b>Б ψ</b>
------	------	-------------	------------

*Quarting* minted in Buda between 1430-1437. Moneyer, Angelo Walich. Pohl, 124-17.

1257	0.39	1.29 x 1.27	<b>α ν</b>
1258	0.50	1.38 x 1.36	<b>α ν</b>
1259	0.58	1.31 x 1.35	<b>α ν</b>
1260	0.56	1.25 x 1.22	<b>α ν</b>
1261	0.23	1.29 x 1.28	<b>α ν</b>

*Quartings* minted in Košice in anul 1434. Moneyer, Urbanus Polner. Pohl, 124-26.

1262	0.24	1.40 x 1.22	<b>α н</b>
1263	0.49	1.35 x 1.36	<b>α н</b>

*Quartings* minted in Košice between 1430-1437. Pohl, 124-24.

1264	0.48	1.23 x 1.24	<b>α α</b>
1265	0.42	1.55 x 1.36	<b>α α</b>

*Quartings* minted in Košice between 1430-1437. Town issue. Pohl, 124-20.

1266	0.46	1.27 x 1.30	<b>α I</b>
1267	0.38	1.41 x 1.38	<b>α I</b>
1268	0.40	1.39 x 1.28	<b>α I</b>
1269	0.42	1.32 x 1.28	<b>α I</b>

*Quartings* minted in Košice between 1430-1437. Pohl, 124-22.

1270	0.41	1.29 x 1.42	<b>α R</b>
------	------	-------------	------------

*Quarting* minted in Košice in the year 1430. Moneyer, Petrus Reichel. Pohl, 124-25.

1271	0.38	1.29 x 1.33	<b>α A</b>
------	------	-------------	------------

*Quarting* minted in Košice between 1430-1437. Pohl, 124-19.

1272	0.36	1.27 x 1.24	<b>α K</b>
------	------	-------------	------------

*Quarting* minted in Košice between 1430-1437. Pohl, 124-23.

1273	0.37	1.35 x 1.26	<b>A ϑ</b>
1274	0.49	1.36 x 1.25	<b>A ϑ</b>

*Quartings* minted in Székesfőhervar between 1430-1437. Pohl, 124-11.

1275	0.53	1.16 x 1.19	<b>A ō</b>
1276	0.65	1.35 x 1.41	<b>A ō</b>
1277	0.42	1.30 x 1.33	<b>A ō</b>
1278	0.41	1.45 x 1.37	<b>A ō</b>
1279	0.49	1.30 x 1.33	<b>A ō</b>
1280	0.30	1.22 x 1.28	<b>A ō</b>
1281	0.38	1.19 x 1.27	<b>A ō</b>

*Quartings* minted in Székesfőhervar between 1430-1437. Pohl, 124-6.

1282	0.45	1.09 x 1.32	<b>A ρ</b>
1283	0.39	1.27 x 1.21	<b>A ρ</b>

*Quartings* minted in Székesfőhervar between 1430-1437.

1284	0.36	1.41 x 1.47	<b>K n</b>
------	------	-------------	------------

*Quarting* minted in Kremnica between 1430-1437. Pohl, 124-36.

1285	0.31	1.24 x 1.34	<b>h n</b>
1286	0.20	1.35 x 1.36	<b>h n</b>
1287	0.36	1.33 x 1.29	<b>h n</b>
1288	0.37	1.33 x 1.28	<b>h n</b>
1289	0.40	1.25 x 1.34	<b>h n</b>
1290	0.59	1.30 x 1.27	<b>h n</b>
1291	0.51	1.38 x 1.35	<b>h n</b>
1292	0.38	1.33 x 1.29	<b>h n</b>
1293	0.36	1.30 x 1.27	<b>h n</b>
1294	0.58	1.32 x 1.34	<b>h n</b>
1295	0.35	1.32 x 1.21	<b>h n</b>
1296	0.59	1.25 x 1.32	<b>h n</b>
1297	0.33	1.19 x 1.41	<b>h n</b>
1298	0.31	1.35 x 1.36	<b>h n</b>
1299	0.31	1.29 x 1.18	<b>h n</b>
1300	0.41	1.44 x 1.38	<b>h n</b>
1301	0.32	1.36 x 1.24	<b>h n</b>
1302	0.35	1.43 x 1.36	<b>h n</b>
1303	0.54	1.32 x 1.36	<b>h n</b>
1304	0.37	1.37 x 1.36	<b>h n</b>
1305	0.43	1.30 x 1.39	<b>h n</b>
1306	0.56	1.39 x 1.38	<b>h n</b>
1307	0.45	1.35 x 1.32	<b>h n</b>
1308	0.32	1.27 x 1.30	<b>h n</b>
1309	0.53	1.32 x 1.36	<b>h n</b>
1310	0.52	1.27 x 1.29	<b>h n</b>
1311	0.34	1.27 x 1.32	<b>h n</b>
1312	0.46	1.38 x 1.42	<b>h n</b>
1313	0.45	1.37 x 1.35	<b>h n</b>
1314	0.36	1.28 x 1.33	<b>h n</b>
1315	0.48	1.32 x 1.33	<b>h n</b>
1316	0.55	1.31 x 1.41	<b>h n</b>
1317	0.39	1.38 x 1.30	<b>h n</b>
1318	0.41	1.49 x 1.43	<b>h n</b>
1319	0.48	1.38 x 1.35	<b>h n</b>
1320	0.34	1.32 x 1.29	<b>h n</b>
1321	0.46	1.27 x 1.27	<b>h n</b>
1322	0.48	1.33 x 1.33	<b>h n</b>
1323	0.53	1.35 x 1.41	<b>h n</b>
1324	0.37	1.35 x 1.33	<b>h n</b>
1325	0.46	1.44 x 1.38	<b>h n</b>
1326	0.56	1.30 x 1.34	<b>h n</b>

1327	0.55	1.27 x 1.32	<b>h n</b> (mis-struck)
1328	0.41	1.34 x 1.36	<b>h n</b>
1329	0.26	1.27 x 1.33	<b>h n</b>
1330	0.45	1.29 x 1.29	<b>h n</b>
1331	0.34	1.25 x 1.30	<b>h n</b>
1332	0.48	1.35 x 1.28	<b>h n</b>
1333	0.52	1.41 x 1.42	<b>h n</b> (mis-struck)
1334	0.43	1.34 x 1.37	<b>h n</b>
1335	0.52	1.39 x 1.28	<b>h n</b>
1336	0.44	1.32 x 1.32	<b>h n</b>
1337	0.50	1.33 x 1.31	<b>h n</b>
1338	0.51	1.33 x 1.33	<b>h n</b>
1339	0.53	1.28 x 1.34	<b>h n</b>
1340	0.34	1.32 x 1.33	<b>h n</b>
1341	0.49	1.30 x 1.23	<b>h n</b>
1342	0.44	1.33 x 1.34	<b>h n</b>
1343	0.62	1.40 x 1.41	<b>h n</b>
1344	0.50	1.32 x 1.29	<b>h n</b>
1345	0.48	1.31 x 1.32	<b>h n</b>
1346	0.42	1.33 x 1.32	<b>h n</b>
1347	0.35	1.36 x 1.36	<b>h n</b>
1348	0.56	1.35 x 1.28	<b>h n</b>
1349	0.48	1.30 x 1.31	<b>h n</b>
1350	0.58	1.40 x 1.36	<b>h n</b>
1351	0.29	1.36 x 1.37	<b>h n</b>
1352	0.26	1.27 x 1.31	<b>h n</b>
1353	0.77	1.38 x 1.41	<b>h n</b>
1354	0.41	1.26 x 1.33	<b>h n</b>
1355	0.40	1.35 x 1.37	<b>h n</b>
1356	0.53	1.33 x 1.26	<b>h n</b>
1357	0.47	1.36 x 1.37	<b>h n</b>
1358	0.44	1.26 x 1.25	<b>h n</b>
1359	0.44	1.32 x 1.19	<b>h n</b>
1360	0.41	1.42 x 1.25	<b>h n</b>
1361	0.40	1.23 x 1.19	<b>h n</b>
1362	0.37	1.36 x 1.32	<b>h n</b>
1363	0.80	1.39 x 1.41	<b>h n</b>
1364	0.37	1.28 x 1.29	<b>h n</b>
1365	0.45	1.35 x 1.36	<b>h n</b>
1366	0.54	1.28 x 1.23	<b>h n</b>
1367	0.57	1.35 x 1.44	<b>h n</b>
1368	0.46	1.43 x 1.43	<b>h n</b>
1369	0.41	1.25 x 1.32	<b>h n</b>

1370	0.59	1.27 x 1.38	<b>h n</b>
1371	0.50	1.40 x 1.37	<b>h n</b>
1372	0.54	1.38 x 1.33	<b>h n</b>
1373	0.42	1.30 x 1.35	<b>h n</b>
1374	0.54	1.32 x 1.35	<b>h n</b>
1375	0.36	1.36 x 1.24	<b>h n</b>
1376	0.49	1.37 x 1.37	<b>h n</b>
1377	0.26	1.40 x 1.34	<b>h n</b>
1378	0.39	1.31 x 1.35	<b>h n</b>
1379	0.52	1.36 x 1.37	<b>h n</b>
1380	0.46	1.35 x 1.35	<b>h n</b>
1381	0.40	1.33 x 1.28	<b>h n</b>
1382	0.41	1.15 x 1.38	<b>h n</b>

*Quartings* minted in Sibiu between 1430-1437. Pohl, 124-28.

1383	0.40	1.38 x 1.40	<b>h R</b>
1384	0.42	1.43 x 1.45	<b>h R</b>
1385	0.55	1.41 x 1.39	<b>h R</b>
1386	0.43	1.33 x 1.39	<b>h R</b>
1387	0.37	1.39 x 1.39	<b>h R</b>
1388	0.50	1.39 x 1.37	<b>h R</b>
1389	0.37	1.27 x 1.27	<b>h R</b>
1390	0.36	1.30 x 1.35	<b>h R</b>
1391	0.46	1.30 x 1.34	<b>h R</b>
1392	0.39	1.28 x 1.43	<b>h R</b>
1393	0.48	1.35 x 1.41	<b>h R</b>
1394	0.44	1.32 x 1.33	<b>h R</b>
1395	0.46	1.37 x 1.32	<b>h R</b>
1396	0.51	1.41 x 1.41	<b>h R</b>
1397	0.52	1.23 x 1.29	<b>h R</b>
1398	0.34	1.37 x 1.29	<b>h R</b>
1399	0.63	1.34 x 1.39	<b>h R</b>
1400	0.32	1.35 x 1.40	<b>h R</b>

*Quartings* minted in Sibiu between 1430-1434. Issue for Nicolae Redwitz. Pohl, 124-29.

1401	0.56	1.33 x 1.27	<b>h ?</b>
1402	0.30	1.32 x 1.33	<b>h ?</b>
1403	0.54	1.46 x 1.42	<b>h ?</b>
1404	0.48	1.30 x 1.28	<b>h ?</b>

*Quartings* minted in Sibiu between 1430-1437. Partially legible marks.

1405	0.50	1.38 x 1.31	<b>✖ ✖</b>
1406	0.51	1.53 x 1.45	<b>✖ ✖</b>

1407	0.53	1.39 x 1.44	✕ ✕
1408	0.40	1.28 x 1.22	✕ ✕
1409	0.30	1.13 x 1.47	✕ ✕
1410	0.39	1.27 x 1.24	✕ ✕
1411	0.36	1.27 x 1.29	✕ ✕
1412	0.37	1.32 x 1.10	✕ ✕

*Quartings* minted between 1430-1437. Unknown mint. Pohl, 124-63.

1413	0.34	1.41 x 1.31	✕ ✕
------	------	-------------	-----

*Quarting* minted between 1430-1437. Unknown mint. Pohl, 124-65.

1414	0.44	1.33 x 1.36	◡ ◡
------	------	-------------	-----

*Quarting* minted between 1430-1437. Unknown mint. Pohl, 124-66.

1415	0.42	1.25 x 1.37	) (
------	------	-------------	-----

*Quarting* minted between 1430-1437. Unknown mint. Pohl, 124-60.

1416	0.48	1.48 x 1.48	☐ ♀
------	------	-------------	-----

*Quarting* minted between 1430-1437. Unknown mint.

1417	0.35	1.35 x 1.28	♯ ? (mis-struck)
------	------	-------------	------------------

*Quarting* minted between 1430-1437. Unknown mint.

1418	0.39	1.46 x 1.47	☒
1419	0.64	1.46 x 1.46	☒
1420	0.56	1.35 x 1.45	☒
1421	0.70	1.44 x 1.37	☒
1422	0.35	1.34 x 1.34	☒
1423	0.72	1.46 x 1.41	☒
1424	0.35	1.53 x 1.53	☒
1425	0.51	1.57 x 1.50	☒
1426	0.51	1.40 x 1.39	☒
1427	0.39	1.35 x 1.47	☒
1428	0.48	1.46 x 1.41	☒
1429	0.66	1.31 x 1.33	☒
1430	0.42	1.46 x 1.48	☒
1431	0.54	1.46 x 1.51	☒
1432	0.58	1.46 x 1.49	☒
1433	0.48	1.35 x 1.38	☒
1434	0.46	1.47 x 1.40	☒
1435	0.39	1.52 x 1.53	☒
1436	0.37	1.22 x 1.30	☒
1437	0.46	1.27 x 1.37	☒
1438	0.50	1.33 x 1.33	☒
1439	0.32	1.48 x 1.45	☒

*Quartings* minted between 1430-1437. Unknown mint.



1440	0.55	1.36 x 1.19	<b>ㄅ</b>
1441	0.46	1.33 x 1.36	<b>ㄅ</b>
1442	0.36	1.43 x 1.44	<b>ㄅ</b>
1443	0.34	1.26 x 1.25	<b>ㄅ</b>
1444	0.32	1.37 x 1.35	<b>ㄅ</b>
1445	0.34	1.31 x 1.34	<b>ㄅ</b>

*Quarings* minted between 1430-1437. Unknown mint.

1446	0.30	1.44 x 1.47	<b>ㄷ</b>
------	------	-------------	----------

*Quarings* minted between 1430-1437. Unknown mint.

1447	0.63	1.26 x 1.30	? <b>ㄷ</b>
1448	0.42	1.29 x 1.26	? <b>ㄷ</b>
1449	0.28	1.27 x 1.23	? <b>ㄷ</b>
1450	0.54	1.32 x 1.40	? <b>ㄷ</b>
1451	0.39	1.30 x 1.31	? <b>ㄷ</b>
1452	0.37	1.41 x 1.34	? <b>ㄷ</b>
1453	0.29	1.30 x 1.33	? <b>ㄷ</b>
1454	0.32	1.45 x 1.42	? <b>ㄷ</b>
1455	0.39	1.36 x 1.35	? <b>ㄷ</b>
1456	0.43	1.30 x 1.30	? <b>ㄷ</b>
1457	0.39	1.27 x 1.34	? <b>ㄷ</b>
1458	0.36	1.42 x 1.41	? <b>ㄷ</b>
1459	0.29	1.26 x 1.34	? <b>ㄷ</b>
1460	0.47	1.43 x 1.44	? <b>ㄸ</b>
1461	0.40	1.19 x 1.17	? <b>ㄸ</b>
1462	0.44	1.34 x 1.36	? <b>ㄸ</b>
1463	0.47	1.27 x 1.24	<b>ㄸ</b> ?
1464	0.43	1.43 x 1.38	? <b>ㄹ</b>
1465	0.25	1.30 x 1.31	? <b>ㄹ</b>
1466	0.39	1.30 x 1.32	? <b>ㄹ</b>
1467	0.56	1.40 x 1.43	? <b>ㄹ</b>
1468	0.49	1.33 x 1.38	? <b>ㄹ</b>
1469	0.33	1.45 x 1.30	<b>ㄹ</b> ?
1470	0.38	1.35 x 1.31	<b>ㄺ</b>
1471	0.42	1.30 x 1.33	? <b>ㄻ</b>
1472	0.32	1.29 x 1.26	<b>ㄼ</b> ?
1473	0.40	1.35 x 1.36	<b>ㄽ</b> ?

*Quartings* minted between 1430-1437. Unknown mints. Partially legible marks

1474	0.56	1.33 x 1.40	??
1475	0.41	1.30 x 1.33	??
1476	0.41	1.33 x 1.35	??
1477	0.58	1.35 x 1.35	??
1478	0.42	1.27 x 1.27	??
1479	0.52	1.33 x 1.39	??
1480	0.41	1.12 x 1.26	??
1481	0.36	1.15 x 1.35	??
1482	0.44	1.28 x 1.38	??
1483	0.45	1.35 x 1.29	??
1484	0.32	1.35 x 1.30	??
1485	0.46	1.31 x 1.32	??
1486	0.50	1.35 x 1.36	??
1487	0.45	1.32 x 1.15	??
1488	0.46	1.34 x 1.25	??
1489	0.37	1.25 x 1.29	??
1490	0.37	1.38 x 1.33	??
1491	0.46	1.29 x 1.24	??
1492	0.60	1.30 x 1.33	??
1493	0.28	1.17 x 1.31	??
1494	0.40	1.38 x 1.32	??
1495	0.55	1.38 x 1.35	??
1496	0.40	1.27 x 1.42	??
1497	0.40	1.30 x 1.35	??
1498	0.25	1.41 x 1.32	??
1499	0.29	1.18 x 1.20	??
1500	0.44	1.44 x 1.41	??
1501	0.53	1.37 x 1.36	??
1502	0.37	1.39 x 1.36	??
1503	0.36	1.29 x 1.42	??
1504	0.41	1.32 x 1.37	??
1505	0.44	1.33 x 1.32	??
1506	0.43	1.31 x 1.35	??
1507	0.55	1.30 x 1.34	??
1508	0.52	1.27 x 1.37	??
1509	0.42	1.35 x 1.37	??
1510	0.32	1.27 x 1.31	??
1511	0.45	1.36 x 1.26	??
1512	0.50	1.38 x 1.30	??
1513	0.74	1.33 x 1.32	??
1514	0.37	1.29 x 1.32	??
1515	0.46	1.43 x 1.40	??
1516	0.53	1.33 x 1.37	??
1517	0.28	1.45 x 1.42	??
1518	0.45	1.34 x 1.45	??

1519	0.42	1.39 x 1.37	??
1520	0.43	1.26 x 1.32	??
1521	0.54	1.32 x 1.41	??
1522	0.40	1.27 x 1.33	??
1523	0.42	1.29 x 1.33	??
1524	0.32	1.32 x 1.38	??
1525	0.24	1.33 x 1.27	??
1526	0.45	1.38 x 1.21	??
1527	0.47	1.28 x 1.35	??
1528	0.55	1.37 x 1.39	??
1529	0.46	1.37 x 1.39	??
1530	0.25	1.45 x 1.41	??
1531	0.45	1.37 x 1.41	??
1532	0.40	1.32 x 1.33	??
1533	0.66	1.31 x 1.28	??
1534	0.43	1.33 x 1.31	??
1535	0.46	1.41 x 1.30	??
1536	0.42	1.37 x 1.36	??
1537	0.32	1.38 x 1.33	??
1538	0.50	1.44 x 1.34	??
1539	0.48	1.38 x 1.34	??
1540	0.43	1.44 x 1.39	??
1541	0.41	1.39 x 1.40	??
1542	0.42	1.39 x 1.24	??
1543	0.32	1.30 x 1.33	??
1544	0.50	1.42 x 1.53	??
1545	0.35	1.38 x 1.32	??
1546	0.49	1.32 x 1.37	??
1547	0.35	1.42 x 1.40	??
1548	0.72	1.34 x 1.40	??
1549	0.39	1.23 x 1.34	??
1550	0.28	1.39 x 1.34	??
1551	0.32	1.26 x 1.30	??
1552	0.61	1.35 x 1.43	??
1553	0.40	1.31 x 1.35	??
1554	0.38	1.22 x 1.24	??
1555	0.45	1.25 x 1.35	??
1556	0.53	1.34 x 1.35	??
1557	0.27	1.31 x 1.30	??
1558	0.48	1.30 x 1.29	??
1559	0.45	1.30 x 1.33	??
1560	0.37	1.30 x 1.32	??
1561	0.36	1.22 x 1.38	??
1562	0.20	1.26 x 1.22	??
1563	0.36	1.24 x 1.30	??
1564	0.24	1.02 x 1.08	??
1565	0.20	1.34 x 0.71	??

*Quartings* minted between 1430-1437. Unknown mints. Illegible marks.

1566	0.45	1.41 x 1.38	??
1567	0.44	1.30 x 1.38	??
1568	0.43	1.37 x 1.30	??
1569	0.62	1.36 x 1.35	??
1570	0.23	1.37 x 1.26	??
1571	0.62	1.48 x 1.38	??
1572	0.39	1.39 x 1.44	??
1573	0.40	1.41 x 1.29	??
1574	0.41	1.32 x 1.27	??
1575	0.62	1.38 x 1.28	??
1576	0.36	1.41 x 1.44	??
1577	0.34	1.36 x 1.40	??
1578	0.27	1.36 x 1.36	??
1579	0.44	1.35 x 1.34	??
1580	0.31	1.44 x 1.37	??
1581	0.32	1.42 x 1.35	??
1582	0.20	1.23 x 1.29	??
1583	0.33	1.30 x 1.36	??
1584	0.50	1.30 x 1.43	??

*Quartings* minted between 1430-1437. unknown mints. Illegible marks. Mis-struck

### *Ducats*

1585	0.21	1.10 x 1.04	<b>s n</b>
------	------	-------------	------------



*Ducat* minted in Sighișoara between 1427-1430. Colective issue.

Obv. Double cross and between its arms the marks **s n**.

Rev. St Ladislau , full length figure, front view, holding an axe in the right hand and a globus cruciger in the left.

Huszár, p. 94, no. 584; CNH, p. 105, no. 128; Unger I, p. 143, no. 455; Pohl, 123-13.

### *Denarii*

1586	0.36	1.07 x 1.07	Obv. [MOR·SIGISMVNDI] Rev. ✚ REGI[S·VNGARIE ET]T Rev. the mark 
1587	0.24	0.99 x 0.99	Obv. [MOR·SIGISMVNDI] Rev. ✚ REGIS·VNGARIE ET]T Rev. the mark 

*Denarii* minted in Košice between 1390-1437.

Obv. Double cross crossing the legend.

Rev. Quartered shield. The Moravian eagle in fields 1 and 4.

Huszár, p. 93, no. 576; CNH, p. 104, no. 121; Unger I, p. 138, no. 449; Pohl, 117-47.

1588	0.35	0.94 x 1.07	Obv. <b>MON·SIGISMUNDI</b> Rev. <b>[✚]REGIS·VNGARIE ETQ</b> Obv. the mark <b>α</b>
------	------	-------------	--

*Denarius* minted in Košice between 1390-1437. Pohl, 117-3.

1589	0.36	1.01 x 1.09	Obv. <b>MON·SIGISMUNDI</b> Rev. <b>[✚]REGIS·VNGARIE ETQ</b> Rev. the mark <b>Ⓞ</b>
------	------	-------------	--

*Denarius* minted in Košice between 1390-1427. Pohl, 117-28.





1590	0.39	1.03 x 1.11	Obv. <b>[MON·SIGISMVNDI</b> Rev. <b>✚ R[EGIS·VNGARIE ETQ]</b> Obv. the mark <b>℞</b> Rev. the mark <b>Ⓜ</b>
1591	0.36	1.10 x 1.13	Obv. <b>MON·SIGISMUNDI</b> Rev. <b>✚·REGIS·VNGARIE ETQ·</b> Obv. the mark <b>℞</b> Rev. the mark <b>Ⓜ</b>
1592	0.37	1.13 x 1.12	Obv. <b>MON·SIGISMUNDI</b> Rev. <b>[✚]REGIS VNGARIE ETQ</b> Obv. the mark <b>℞</b> Rev. the mark <b>Ⓜ</b>
1593	0.32	1.14 x 1.08	Obv. <b>[MON·SIGISMUNDI</b> Rev. <b>[✚]REGIS VNGARIE ETQ</b> Obv. the mark <b>℞</b> Rev. the mark <b>Ⓜ</b>
1594	0.31	1.24 x 1.26	Obv. <b>MON·SIGISMUNDI</b> Rev. <b>✚ REGIS VNGARIE ETQ</b> Obv. the mark <b>℞</b> Rev. the mark <b>Ⓜ</b>
1595	0.24	0.98 x 0.99	Obv. <b>[MON·SIGISMUNDI</b> Rev. <b>[✚]REGIS VNGARIE ETQ</b> Obv. the mark <b>℞</b> Rev. the mark <b>Ⓜ</b>
1596	0.35	1.05 x 1.08	Obv. <b>[MON·SIGISMUNDI</b> Rev. <b>[✚]REGIS VNGARIE ETQ</b> Obv. the mark <b>℞</b> Rev. the mark <b>Ⓜ</b>

*Denarii* minted in Baia Mare between 1399-1405. Moneyer, Markus of Nürnberg. Pohl, 117-16.



1597	0.32	1.02 x 1.14	Obv. <b>MON·SIGISMUNDI</b> Rev. <b>[✚]REGIS·VNGARIE ETQ</b>
------	------	-------------	--

			<i>Obv. the mark</i> <b>℞</b>
1598	0.34	1.05 x 0.99	<i>Obv.</i> <b>℞OR • SIGIS℞VRDI</b> <i>Rev.</i> <b>✦ REGIS VNGARIE ETQ</b> <i>Obv. the mark</i> <b>℞</b>
1599	0.26	1.11 x 1.08	<i>Obv.</i> <b>℞ OR • SIGIS℞VRDI</b> <i>Rev.</i> <b>✦ REGIS VNGARI[ET ETQ]</b> <i>Obv. the mark</i> <b>℞</b>
1600	0.35	1.02 x 1.10	<i>Obv.</i> <b>℞OR •  SIGIS℞VRDI</b> <i>Rev.</i> <b>✦ REGIS •  VNGARIE ETQ</b> <i>Rev. the mark</i> <b>℞</b>

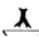

*Denarii* minted in Baia Mare between 1390-1427. Pohl, 117-7.

1601	0.33	1.11 x 0.97	<i>Obv.</i> <b>℞OR • SIGIS℞VRDI</b> <i>Rev.</i> <b>✦ REGIS • V NGARIE ETQ</b> <i>Obv. the mark</i> <b>℞</b> <i>Rev. the mark</i> 
1602	0.41	1.12 x 1.06	<i>Obv.</i> <b>℞OR • SIGIS℞VRDI</b> <i>Rev.</i> <b>✦ RE GIS VNGARIE ETQ</b> <i>Obv. the mark</i> <b>℞</b> <i>Rev. the mark</i> 
1603	0.34	1.04 x 1.02	<i>Obv.</i> <b>℞OR • SIG IS℞VRDI</b> <i>Rev.</i> <b>✦ REGIS VNGARIE ETQ</b> <i>Obv. the mark</i> <b>℞</b> <i>Rev. the mark</i> 
1604	0.34	1.01 x 1.08	<i>Obv.</i> <b>℞OR • SIG IS℞VRDI</b> <i>Rev.</i> <b>✦ REGI S VNGARIE ETQ</b> <i>Obv. the mark</i> <b>℞</b> <i>Rev. the mark</i> 



*Denarii* minted in Baia Mare between 1390-1405. Pohl, 117-19.

1605	0.34	1.00 x 1.01	<i>Obv.</i> <b>℞OR • SIGIS ℞VRDI</b> <i>Rev.</i> <b>✦ R EGIS • VNGARIE]ETQ</b> <i>Rev. the mark</i> 
1606	0.35	1.02 x 1.01	<i>Obv.</i> <b>℞OR • SIGIS℞VRDI</b> <i>Rev.</i> <b>✦ REGIS VNGARIE ETQ</b> <i>Rev.</i> 

*Denarii* minted between 1390-1437. Unknown mint. Pohl, 117-49.

1607	0.28	1.10 x 1.08	<i>Obv.</i> <b>℞OR • S IG IS℞VRDI</b> <i>Rev.</i> <b>✦ REGIS • VNGA]RIE[ETQ</b> <i>Rev. the mark</i> 
1608	0.27	1.11 x 1.10	<i>Obv.</i> <b>℞OR • SIGIS℞VRDI</b> <i>Rev.</i> <b>✦ REGIS VNGARIE [ETQ</b> <i>Rev. the mark</i> 



*Denarii* minted between 1390-1437. Unknown mint. Pohl, 117-46.

1609	0.34	1.19 x 1.14	Obv. [MOR]•SIGIS[VNDI] Rev. †[REGIS•V]RGTRIE•E[TA] Rev. the mark 
1610	0.28	1.07 x 1.05	Obv. [MO]R SIGIS[VNDI] Rev. †[REGISVNG]TRIE•E[TA] Rev. the mark 

*Denarii* minted between 1390-1437. Unknown mint. Pohl, 117-32.

1611	0.26	1.03 x 1.03	Obv. [MOR•SIGISVNDI] Rev. †[REGIS VNGT]RIE E[TA]
1612	0.23	0.93 x 0.99	Obv. [MOR•]SIGIS[VNDI] Rev. † REGI[S•VNGTRIE E]TA
1613	0.23	0.93 x 0.93	Obv. [MOR•SIGISVNDI] Rev. † REGIS VNGTRIE E[TA]
1614	0.27	1.06 x 1.02	Obv. [MOR•SIG]IS[VNDI] Rev. † REGIS•V]RGTRIE[E]TA
1615	0.29	1.10 x 1.08	Obv. [MOR•SIG]IS[VNDI] Rev. †] REGIS[VNGTRIE E]TA
1616	0.29	0.95 x 1.01	Obv. [MOR•SIGISVNDI] Rev. †[REGIS]•VNGTRI[E]E[TA]
1617	0.31	0.95 x 0.95	Obv. [MOR•SIGISVNDI] Rev. †[REGIS VNGTRIE E]TA
1618	0.22	1.00 x 1.03	Obv. [MOR•SIGISVNDI] Rev. †[REGIS VNGTRIE]E[TA]
1619	0.38	1.10 x 1.05	Obv. [MOR•SIGIS]VNDI Rev. †[REGIS VNGTRIE E]TA
1620	0.29	0.95 x 0.96	Obv. [MOR•S]IGIS[VNDI] Rev. †[REGIS VNGTRIE]E[TA]
1621	0.18	0.88 x 0.98	Obv. [MOR•SIGISVNDI] Rev. †[REGIS VNGTRIE E]TA
1622	0.19	0.82 x 0.95	Obv. [MOR•SIGISVNDI] Rev. †[REGIS VNGTRIE E]TA
1623	0.35	1.13 x 0.5	Obv. MOR•S]IGIS[VNDI] Rev. †[REG]IS V]RGTRIE E[TA]
1624	0.30	0.93 x 0.98	Obv. [MOR•SIGISVNDI] Rev. †[REGIS VNGTRIE E]TA
1625	0.24	1.01 x 1.08	Obv. [MOR•SIGISVNDI] Rev. †[REGIS VNGTRIE E]TA

*Denarii* minted between 1390-1437. Unknown mints. Illegible marks.

1626	0.36	1.15 x 1.21	(mis-struck) Rev. the mark 
1627	0.34	1.05 x 1.07	(mis-struck) Rev. the mark 
1628	0.41	1.13 x 1.10	(mis-struck)
1629	0.36	1.05 x 1.09	(mis-struck)
1630	0.28	1.08 x 1.09	(mis-struck)

1631	0.29	1.08 x 1.10	(mis-struck)
1632	0.49	1.04 x 1.12	(mis-struck)

Denari minted between 1390-1437. Unknown mints. Illegible marks. Mis-struck.

### Nicolae Redwitz

1633	0.32	1.44 x 1.42	
------	------	-------------	--

Coin issued between 1429-1435.

Obv. Cross moline, above the shield a crown and in its left the marks

Rev. Full length figure wearing a crown, front view. It holds a sceptre in his right hand and a cross in its left.

MBR, p. 29-30.

## Un tezaur monetar din vremea lui Sigismund de Luxemburg aflat în colecția Muzeului Municipal „Ioan Raica” din Sebeș

- rezumat -

Articolul de față tratează un tezaur monetar ce face parte din colecția numismatică Alfred Heitz, donată de nepoata acestuia, Heitz Grete, Muzeului Municipal „Ioan Raica” din Sebeș, în anul 1966.

Tezaurul este compus aproape în totalitate din monedă sigismundiană mărunță, cuprinzând în total 1633 piese, respectiv 1104 denari *parvi*, 480 *quarting*-i, 47 denari și un ducat, toate de la Sigismund de Luxemburg și o monedă atribuită lui Nicolae Redwitz.

Pentru 45% din monede (735 exemplare) au putut fi identificate siglele monetărilor în care au fost emise, acestea fiind: Baia Mare, Baia de Arieș, Bratislava, Buda, Košice, Kremnica, Pécs, Sibiu, Smolnik, Székesfehérvár, Timișoara și Sighișoara.

Tezaurul prezentat vine, astfel, să completeze datele referitoare la emisiunile monetare din timpul lui Sigismund de Luxemburg, îmbogățind tabelul de sigle al monetărilor și monetarilor cu date inedite, oferind noi informații despre scăderea valorii calitative a emisiunilor monetare de la începutul secolului al XV-lea și aducând o nouă dovadă asupra folosirii monedei mărunte în schimburile comerciale.

Moneda atribuită lui Nicolae Redwitz, prezentă în tezaur, vine în completarea repertoriului descoperirilor similare, depozitul monetar prezentat fiind cel de-al doilea din Transilvania, după cel de la Vinerea, în care sunt asociate monedele lui Sigismund de Luxemburg cu emisiuni de acest tip. În același timp, este cel mai mare tezaur cu monedă de la Sigismund cunoscut până la ora actuală în Transilvania și Banat.

### Explicația figurilor și a planșelor

**Fig. 1.** Ștanță medievală pentru bătut monede descoperită la Piatra Craivii.

**Fig. 2.** Reproducerea gravată de pe ștanța descoperită la Piatra Craivii (a); reversul unui *quarting* emis de Sigismund de Luxemburg (b).

**Fig. 3.** Repartizarea monedelor pe nominale.

**Fig. 4.** Repartizarea monedelor pe monetăriile emitente.

**Fig. 5.** Oscilația greutateilor denarilor *parvi*.



- Fig. 6.** Oscilația greutateilor *quarting*-ilor.  
**Fig. 7.** Oscilația greutateilor denarilor.  
**Fig. 8.** Oscilația greutateilor medii a denarilor *parvi* pe monetării.  
**Fig. 9.** Oscilația greutateilor medii a *quartingi*-lor pe monetării.  
**Fig. 10.** Oscilația greutateilor medii a greutateii denarilor pe monetării.  
**Pl. 1.** *Denari parvi*.  
**Pl. 2.** *Denari parvi*.  
**Pl. 3.** *Denari parvi*.  
**Pl. 4.** *Denari parvi*.  
**Pl. 5.** *Denari parvi*.  
**Pl. 6.** *Quartingi*.  
**Pl. 7.** *Quartingi*.  
**Pl. 8.** *Quartingi* și un *ducat* (nr. 1585).  
**Pl. 9.** *Denari* și moneda atribuită lui Nicolae Redwitz (nr. 1633).

### Bibliographical Abbreviations

- Anghel 1974 - Gheorghe Anghel, *O ștanță medievală pentru bătut monede descoperită în cetatea de la Piatra Craivii*, in *StComSibiu*, 18, 1974, p. 151-155.
- Anghel 1976 - Gheorghe Anghel, *Fortificația orașului Sebeș*, in *Apulum*, XIV, 1976, p. 147-159.
- CNH - Ladislau Réthy, Günther Probszt, *Corpus Nummorum Hungariae*, Graz, 1958.
- Coza 2004 - Mihaela Coza, *Tezaurul monetar de la Vinerea (secolele XIII-XVII)*, in *Apulum*, XLI, 2004, p. 187-393.
- Dan 1997 - Dorin Ovidiu Dan, *Contribuții la cunoașterea rolului economic al Sebeșului (sec. XIV-XIX)*, in *Apulum*, XXXIV, 1997, p. 273-285.
- Dudău, Sonoc 2008 - Oltea Dudău, Alexandru Gh. Sonoc, *Un presupus tezaur de denari parvi de la Sigismund de Luxemburg din colecția dr. Mauksch și câteva considerații cu privire la campania din Transilvania a sultanului Murad II (1438) și la reflectarea ei în izvoarele scrise*, in *Monedă și comerț în sud-estul Europei*, II, 2008, p. 149-185.
- Gogu 2002 - Monica Gogu, *Un tezaur de monedă măruntă descoperit la Curtea Domnească din Suceava*, in *CN*, VIII, 2002, p. 213-221.
- Gyulai et alii 1983 - Paul Gyulai, Francisc Pap, Attila Palkó, *Atelier de falsuri monetare în cetatea Lita*, in *ActaMN*, XX, 1983, p. 521-525.
- Huszár - Lajos Huszár, *Münzkatalog Ungarn von 1000 bis Heute*, München, 1979.
- Isăcescu 1980 - Elena Isăcescu, *Monedele atribuite lui Nicolae Redwitz*, in *SCN*, VII, 1980, p. 99-107.
- Iosifaru et alii 2008 - Mariana Iosifaru, Ion Tuțulescu, Claudiu Aurel Tulugea, *Râmnicu Vâlcea, jud. Vâlcea. Punct: Parcul Mircea cel Bătrân*, in *CCA. Campania 2007*, 2008, p. 253-256.

- Keve 2007 - László Keve, *Tezaur monetar din vremea lui Sigismund de Luxemburg în colecția Muzeului Județean Mureș*, in *Monedă și comerț în sud-estul Europei*, I, 2007, p. 187-206.
- MBR - G. Buzdugan, Oct. Luchian, C. C. Oprescu, *Monede și bancnote românești*, București, 1977.
- Pap 2002 - Francisc Pap, *Repertoriul numismatic al Transilvaniei și Banatului secolele 11-20. Despre circulația monetară în Transilvania și Banat secolele 11-20*, Cluj-Napoca, 2002.
- Pap, Bartók 1997 - Francisc Pap, Botond Bartók, *Tezaurul monetar de la Vârgheș, jud. Covasna (sec. XV)*, in *Acta*, I, 1997, p. 181-196.
- Pohl - Artúr Pohl, *Münzzeichen und Meisterzeichen auf ungarischen Münzen des Mittelalters 1300-1540*, Budapest, 1982.
- Pohl 1967-1968 - Artúr Pohl, *Zsigmond király pénzverése (1387-1437)*, in *NK, LXVI-LXVII*, 1967-1968, p. 43-56.
- Sârbu 2001 - Aneta Sârbu, *Aspecte privind Muzeul municipal Sebeș*, in *PA*, I, 2001, p. 215-234.
- Unger I - Emil Unger, *Magyar éremhatározó I*, Budapest, 1997.
- Velter 1978 - Ana-Maria Velter, *Date privitoare la un tezaur din sec. al XV-lea descoperit la Turda*, in *CN*, I, 1978, p. 32-41.
- Weißkircher 1936 - Richard Weißkircher, *Ein Münzenfund aus Dobring*, in *SV*, 59, 1936, p. 316-317.

**Keywords:** coin hoard, numismatics, fake coins, *denarii parvi*, *quarting*, die, Transylvania, Sigismund of Luxemburg.

**Cuvinte-cheie:** tezaur monetar, numismatică, falsuri monetare, *denarii parvi*, *quarting*, ștanță, Transilvania, Sigismund de Luxemburg.



Pl. 1. *Denarii parvi* (scale 2:1)



Pl. 2. *Denarii parvi* (scale 2:1)



Pl. 3. *Denarii parvi* (scale 2:1)



Pl. 4. *Denarii parvi* (scale 2:1)



Pl. 5. *Denarii parvi* (scale 2:1)



Pl. 6. *Quartings* (scale 1.5:1)





Pl. 7. *Quartings* (scale 1.5:1)



Pl. 8. *Quartings* (scale 1.5:1) and a *ducat* (no. 1585) (scale 2:1)



**Pl. 9.** *Denarii* and the coin attributed to Nicolae Redwitz (no. 1633)  
(scale 2:1)